



SPECIAL TEAMS

2007

vs. MONMOUTH



vs. NEW HAMPSHIRE



vs. NORTHEASTERN



vs. NAVY



vs. JAMES MADISON





vs. RICHMOND



vs. VILLANOVA



NATIONAL RANKINGS

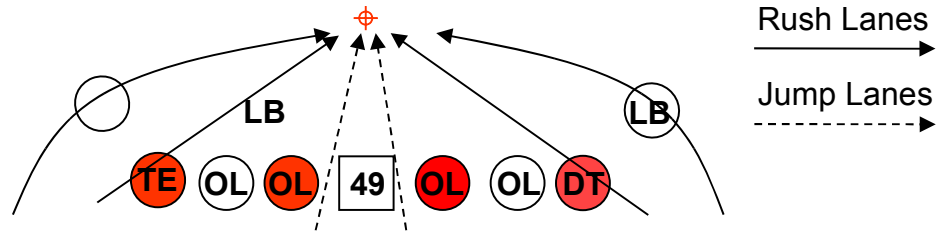
		
Punting	Not Ranked	77 Josh Brite
PR Individual	66 A.Love	56 S.McBride
KR Individual	79 K. Michaud	86 L.Moore
FG Individual	8 J. Striefsky	3 P.Gärtner
PR Team	101	59
KR Team	91	6
PR Y Defense	10	23
KR Y Defense	43	33



PAT/FG TEAM

47

36



SYSTEM ANALYSIS

Regular Double Wing PAT/FG

Interior Line: Inside Zone Step

Shoulder Down Protection

TE & W: Man Protection

LS: Shoulder Down Protection

PROTECTION

Block Tech: Inside Zone & Man

Weakness: RG-RTE-LG-LTE

Block Point: 5Y

Overall Quality: Solid Protection!

Weak over the Guards & the

TE's (Jumper > Edge)

SHORT SNAPPER

#49 Zach Reed, FR

Good & accurate Short Snapper

Average Speed, Shoulder Down

SHIFTS/MOTION

NOPE

OPERATIONS

Get Off 1,33 – 1,59 sec.

Ø 1,42 sec.

SUMMARY

Solid PAT/FG Unit with a Freshman

Short Snapper. They didn't faced
real Rush this season.

The Operation Time is very slow:

Ø 1,42 sec.

ANY BLOCKED PAT/FG?

NOPE

How-When?

How-When?

KEY OBSERVATIONS

Both Wings are Back Up LB!

LTE is the Starting Left DT

RTE is the Starting TE

STATS

PAT 51-51 100%

FG 16-18 88,9%, No Blocks!!

KICKER

#47 Jon Striefsky

Alignment: 3-2

LT/RT Footed: Right

Approach: Soccer

Steps: 3 (Jab, Drive & Plant)

Get Off: 1,33 – 1,59 sec.

Hash Tend: Always to the near Pole

Distance: 42Y

Under Pressure: No Follow Thru!

Overall: Very consistent Kicker

with a slow Operation Time.

HOLDER

#36 Ted Shea, SO (LS)

Good Ball Handling, Can't reach!

Has a very comfortable Stance!

FAKES?

NOPE

COVERAGE

No Releases on FG's

NO Scoop & Score Coverage on

PAT's



PAT-FG STATS

FIELD GOALS	FGM-FGA	Pct	01-19	20-29	30-39	40-49	50-99	Lg	Blk
Striefsky	16-18	88.9	1-1	7-9	6-6	2-2	0-0	42	0

FG SEQUENCE	Delaware	OPPONENTS
William and Mary	-	(20), 35
West Chester	(26), (26)	-
Rhode Island	(22)	-
Towson	(26), (20)	44
Monmouth	-	35
New Hampshire	(32)	42
Northeastern	(37), (31), (19)	-
Navy	(36)	(29)
James Madison	(24), (31), (37)	-
Richmond	(20), (42), 22	(32), 34, (41)
Villanova	(42), 29	(42), 47, (36), (36)

Numbers in (parentheses) indicate field goal was made.

CAA PAT-FG STATS

FIELD GOALS	G	Made	Att	Pct	PAT KICKING	G	Made	Att	Pct
1. Delaware.....	11	16	18	.889	1. Delaware.....	11	51	51	1.000
2. James Madison.....	11	13	15	.867	Richmond.....	11	46	46	1.000
3. Richmond.....	11	14	19	.737	Maine.....	11	22	22	1.000
4. Maine.....	11	10	14	.714	Towson.....	11	15	15	1.000
5. Massachusetts.....	11	9	13	.692	5. William and Mary....	11	40	41	.976
6. Villanova.....	11	12	18	.667	6. Massachusetts.....	11	38	39	.974
Towson.....	11	12	18	.667	7. Hofstra.....	11	34	35	.971
8. Rhode Island.....	11	9	14	.643	Villanova.....	11	34	35	.971
9. New Hampshire.....	11	6	10	.600	9. Northeastern.....	11	28	29	.966
10. William and Mary....	11	9	16	.562	10. James Madison.....	11	46	48	.958
11. Hofstra.....	11	14	26	.538	11. New Hampshire.....	11	50	54	.926
12. Northeastern.....	11	3	8	.375	12. Rhode Island.....	11	23	26	.885



PAT-FG PERSONAL

#47 Jon Striefsky
Place Kicker
Sophomore
Kicker



Lansdale, PA/North Penn

High School: Competed in football, baseball, basketball, and soccer at North Penn High School...two-year varsity letterwinner as a kicker and punter in football for head coach Dick Beck...

At Delaware: Walk-on...third-year member of the squad...has sophomore eligibility after sitting out 2006 season as a redshirt despite being No. 2 on depth chart all season...top candidate to take over extra point and field goal placements and kickoff chores after two-year starter Zach Hobby left school following the 2006 fall semester...will battle incoming true freshman Mike Perry for starting kicking spot for Hens...had a solid spring and was outstanding in Blue-White Spring Game in April, connecting on both extra point attempts and converting six of seven field goal attempts...connected on field goals from 43 and 42 yards in controlled scrimmage...has seen action in just one career game...**2006:** Second-year backup to sophomore kicker Zach Hobby...did not see game action and retained sophomore eligibility...team went 5-6 under head coach K.C. Keeler...hit on all four extra point attempts and connected on four of seven field goal attempts with a long of 32 yards in Blue-White spring game...**2005:** One of eight true freshmen to see action for the Blue Hens...walk-on who was thrust into action vs. James Madison Oct. 22 when Hobby was suspended for missing the pre-game meal...game was his only action of the season...handled kickoff duties and missed his only extra point attempt in Blue Hens' upset win over the defending national champions...team went 6-5.

Personal: Jonathan Edmund "Jon" Striefsky ("stri-eff-ski")...born Oct. 21, 1986...son of Edmund and Barbara Striefsky...finance major at Delaware...has a younger sister...works as a landscaper and umpires youth baseball during the summer...uncle, James Striefsky, played college soccer at Quinnipiac in 1980-84.

#49 Zack Reed
Short Snapper
Freshman
Tight End



Huntingdon, PA/Huntingdon Area

Has come into his own as one of the premiere long snappers in the conference...his reliability was big in last season's improvement with the kicking game...undecided on a major...Born June 2, 1987.

High School: Played tight end, inside linebacker, and deep snapper at Huntingdon Area High School for head coach Jim Zauzig...team captain...four-year varsity performer in basketball and two-year standout in track and field...earned second team all-conference honors in basketball as a senior...two-year team captain in basketball...National Honor Society.

At Delaware: Will play tight end at Delaware...one of two tight ends in Delaware's 2007 recruiting class.

Personal: Zachary Gilbert "Zack" Reed...born June 9, 1988 in Huntingdon, PA...son of Rick and Sue Reed...plans to major in exercise science...would like to become a college strength and conditioning coach after graduation...has worked as a lifeguard at a local pool during the summer...both parents are fifth grade elementary school teachers...one of three children...father played college basketball at Penn State-Beaver and Lock Haven...enjoys hiking in his spare time.

#36 Ted Shea
Holder
Junior
Long Snapper/Holder
Wilmington, DE/Tatnall



High School: Three-sport standout at Tatnall School in Wilmington, DE where he played football, lacrosse, and basketball...captained each team...four-year starter in football for head coach and former Delaware tight end Jody Russell...earned first team all-conference honors as a safety and linebacker three times

At Delaware: Valuable member of the Blue Hen special teams unit...walk-on who is believed to be one of the few college players at any level to double as a deep snapper on punts and holder on placements...will handle both duties for the second straight year this fall...dependable deep snapper who has yet to have a punt blocked...had one tackle in Blue-White Spring Game in April...**2006:** Earned letter in first varsity season as he handled all deep snapping duties on punts and holding responsibilities on placements in all 11 games...Delaware did not have a punt blocked all season in 46 attempts and the Blue Hens converted 35 of 37 extra points and 8 of 14 field goals...team went 5-6 under head coach K.C. Keeler...

At Northeastern: 2005: Attended Northeastern but did not play football...was a member of the Northeastern club lacrosse team.

Personal: Edward Thomas "Ted" Shea...born May 15, 1985...son of Thomas and Mary Shea...has two older sisters...mother is a graduate of Delaware...business major at Delaware...works as a laborer during the summer...cousin, Mick Purzycki, is currently a sophomore wide receiver for Delaware and his uncle, Mike Purzycki, was a standout wide receiver at Delaware in 1963-66, earning first team All-Middle Atlantic honors as a senior and recording 98 receptions for 1,390 yards for his career.



PAT-FG OPERATIONS

OPP	BATTERY	SNAP	KICK	PLACE	TIME	PRO - COM
MONM	47-36-49	#	PAT		1,37	+
MONM	47-36-49	Knee	PAT		1,39	LTE – RTE
MONM	47-36-49	N2N	PAT		1,37	RTE – LG
MONM	47-36-49	#	PAT		1,44	RTE
MONM	47-36-49	N2N	PAT		1,37	LT – LTE – LW
MONM	47-36-49	N2N	PAT		1,41	LT – LTE – LW
UNH	47-36-49	KNee	FG 32Y LH		1,45	LG – RTE
UNH	47-36-49	N2N	PAT		1,34	RTE – LTE
UNH	47-36-49	N2N	PAT		1,41	RG – RTE
UNH	47-36-49	N2N	PAT		1,41	LT
NOEA	47-36-49	#	FG 37Y LH		1,49	LTE
NOEA	47-36-49	Low	PAT		1,56	RG – RTE
NOEA	47-36-49	N2N	FG 31Y RH		1,33	LT – LTE – LW
NOEA	47-36-49	#	PAT		1,45	LTE
NOEA	47-36-49	Knee	PAT		1,36	LTE – LW
NOEA	47-36-49	N2N	FG 19Y RH		1,40	LTE – LT (T Over)
NAVY	47-36-49	Knee	PAT		1,35	LTE – LW
NAVY	47-36-49	Low	PAT		1,45	RG – RTE
NAVY	47-36-49	#	PAT		1,42	LG – LT – RG
NAVY	47-36-49	#	PAT		1,31	RTE – RW
NAVY	47-36-49	N2N	PAT		1,44	RG – LG
NAVY	47-36-49	N2N	PAT		1,48	LG – RTE – RW
NAVY	47-36-49	#	FG 36Y LH		1,59	RG
NAVY	47-36-49	#	PAT		1,38	RG – LG
NAVY	47-36-49	N2N	PAT		1,56	RG – LG
JAMA	47-36-49	#	PAT		1,37	RG – RTE
JAMA	47-36-49	N2N	FG 24Y LM		1,36	RG
JAMA	47-36-49	N2N	FG 31Y LH		1,47	RTE – RT – RG
JAMA	47-36-49	N2N	FG 37Y LH		1,54	RG – RTE



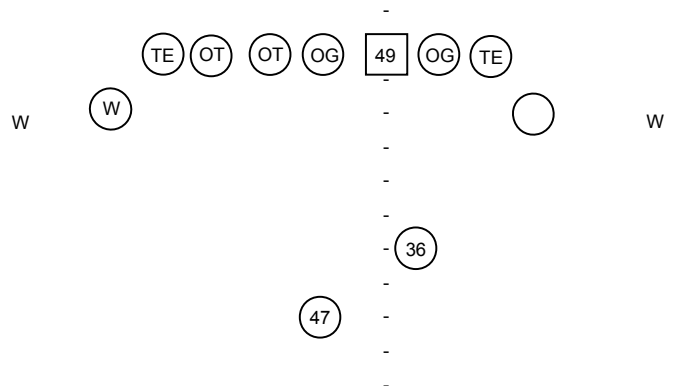
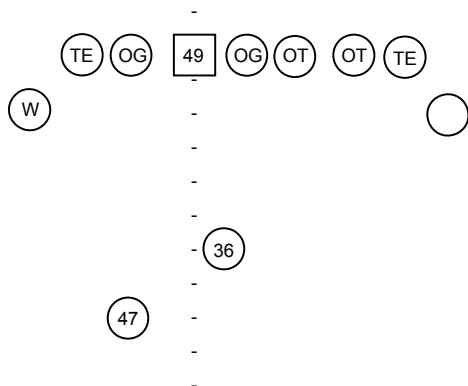
PAT-FG OPERATIONS

OPP	BATTERY	SNAP	KICK	PLACE	TIME	PRO - COM
JAMA	47-36-49	#	PAT		1,48	RG – RT
JAMA	47-36-49	N2N	PAT		1,51	LG – RG
JAMA	47-36-49	Low	PAT		1,53	RT – RTE
RICH	47-36-49	Low	PAT		1,37	LT – RG
RICH	47-36-49	Low	PAT		1,51	LT
RICH	47-36-49	N2N	PAT		1,40	RG – RT – LG
RICH	47-36-49	N2N	PAT		1,41	RG – LTE – LW
RICH	47-36-49	N2N	PAT		1,51	LG – LTE – LW
RICH	47-36-49	Knee	PAT		1,33	LG – LW – RG
RICH	47-36-49	#	FG 20Y		1,39	LTE
RICH	47-36-49	Knee	FG 42Y RH		1,45	LTE – LW
RICH	47-36-49	High	FG 22Y LM	◀	1,51	LG – RG
VILLA	47-36-49	Knee	FG 42Y RH		1,45	LT – LW
VILLA	47-36-49	#	PAT		1,45	LW -LTE-RT-RTE
VILLA	47-36-49	N2N	FG 29Y LH	▶	1,52	RW – RG

TACKLE OVER

vs. VILLA (29Y FG LH)

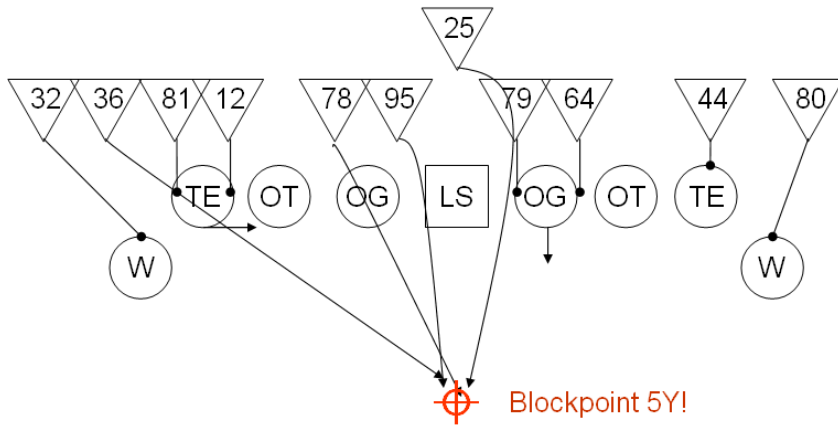
vs. NOEA (19Y FG RH)





PAT-FG BLOCK vs. DELAWARE

PAT/FG BLOCK CHICKEN RIGHT



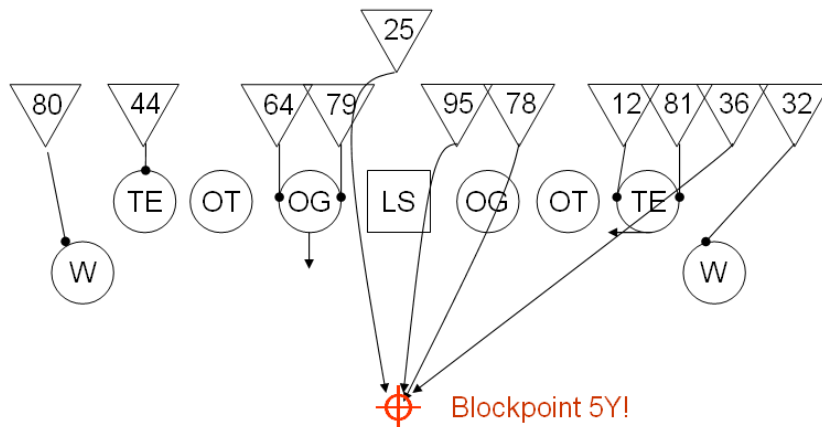
- 78: Rush B Gap
- 95: Rush A Gap > Touch Longsnapper
- 12: Jerk In TE Inside Shoulder/Number
- 81: Jerk In TE Outside Shoulder/Number
- 36: Crack In Outside Hip TE & Rush Block Point
- 32: Attack Wing Inside Shoulder > Scoop & Score



■ H

- 79: Blow Up G > Grab, Pinch & Blow
- 64: Blow Up G > Grab, Pinch & Blow
- 80: Attack Wing Inside Shoulder > Scoop & Score
- 44: Hold Up TE
- 78: Rush B Gap
- 95: Rush A Gap > Touch Longsnapper
- 25: Sugar In, Slip Thru Behind Blow Up & Block Kick

PAT/FG BLOCK CHICKEN LEFT



- 79: Blow Up G > Grab, Pinch & Blow
- 64: Blow Up G > Grab, Pinch & Blow
- 80: Attack Wing Inside Shoulder > Scoop & Score
- 44: Hold Up TE
- 78: Rush B Gap
- 95: Rush A Gap > Touch Longsnapper
- 25: Sugar In, Slip Thru Behind Blow Up & Block Kick

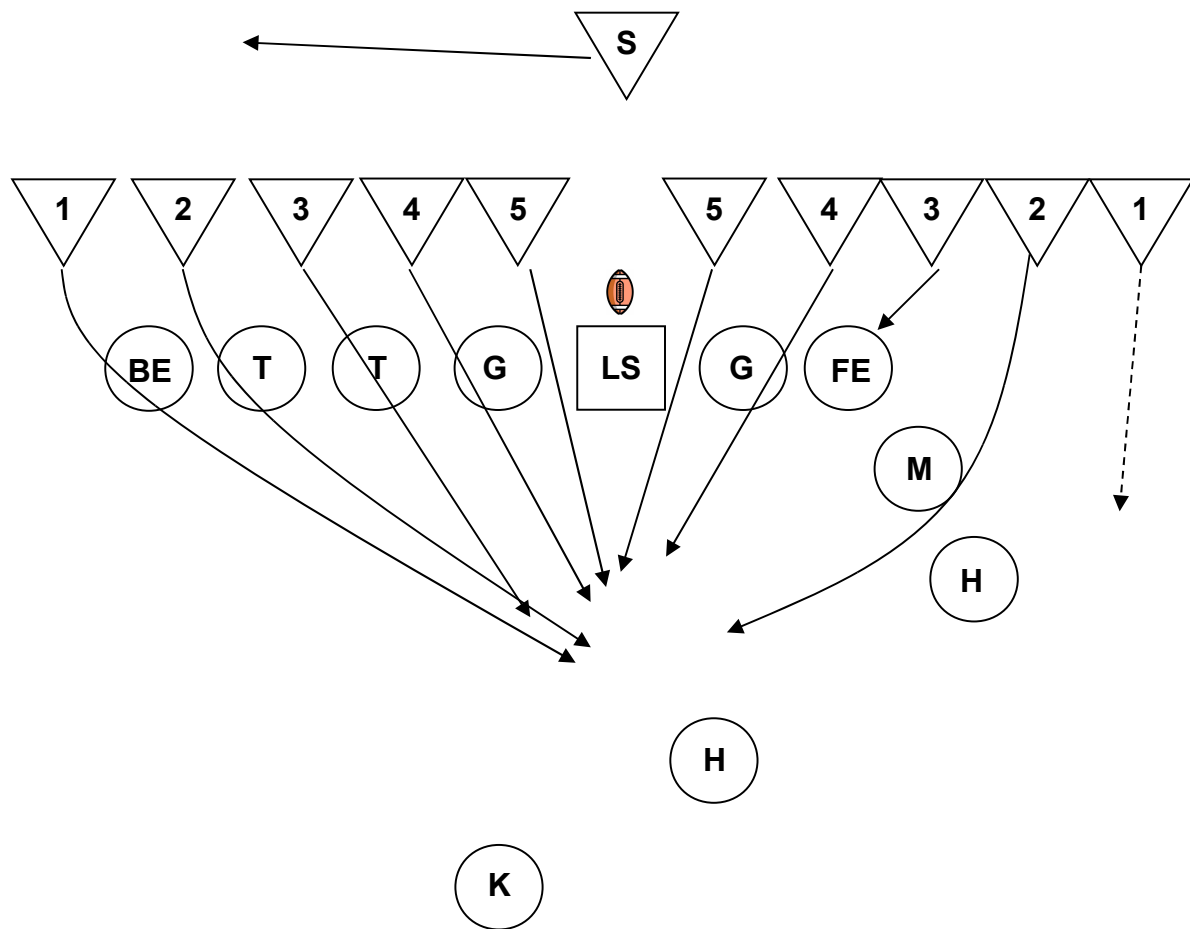


■ H

- 78: Rush B Gap
- 95: Rush A Gap > Touch Longsnapper
- 12: Jerk In TE Inside Shoulder/Number
- 81: Jerk In TE Outside Shoulder/Number
- 36: Crack In Outside Hip TE & Rush Block Point
- 32: Attack Wing Inside Shoulder > Scoop & Score



FG BLOCK 5-5 OFF RIGHT vs. MONMOUTH



Block Side:

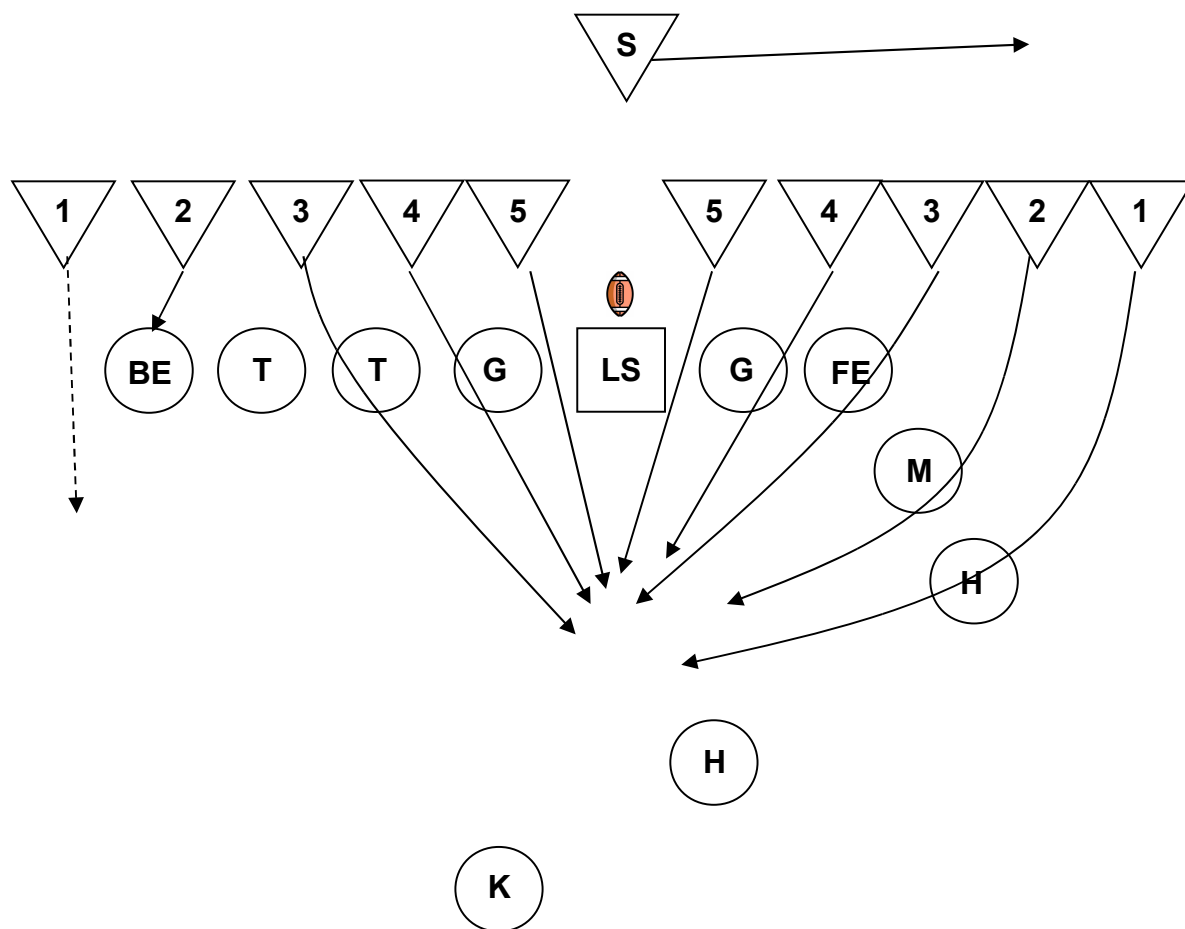
- #1 Rush (E)
- #2 Rush (D)
- #3 Rush (C)
- #4 Rush (B)
- #5 Rush (A)
- S Safety Block Side

Back Side:

- #1 Safety Back Side
- #2 Rush (D)
- #3 Hold Up & Freeze FE
- #4 Rush (B)
- #5 Rush (A)



FG BLOCK 5-5 OFF LEFT vs. MONMOUTH



Back Side:

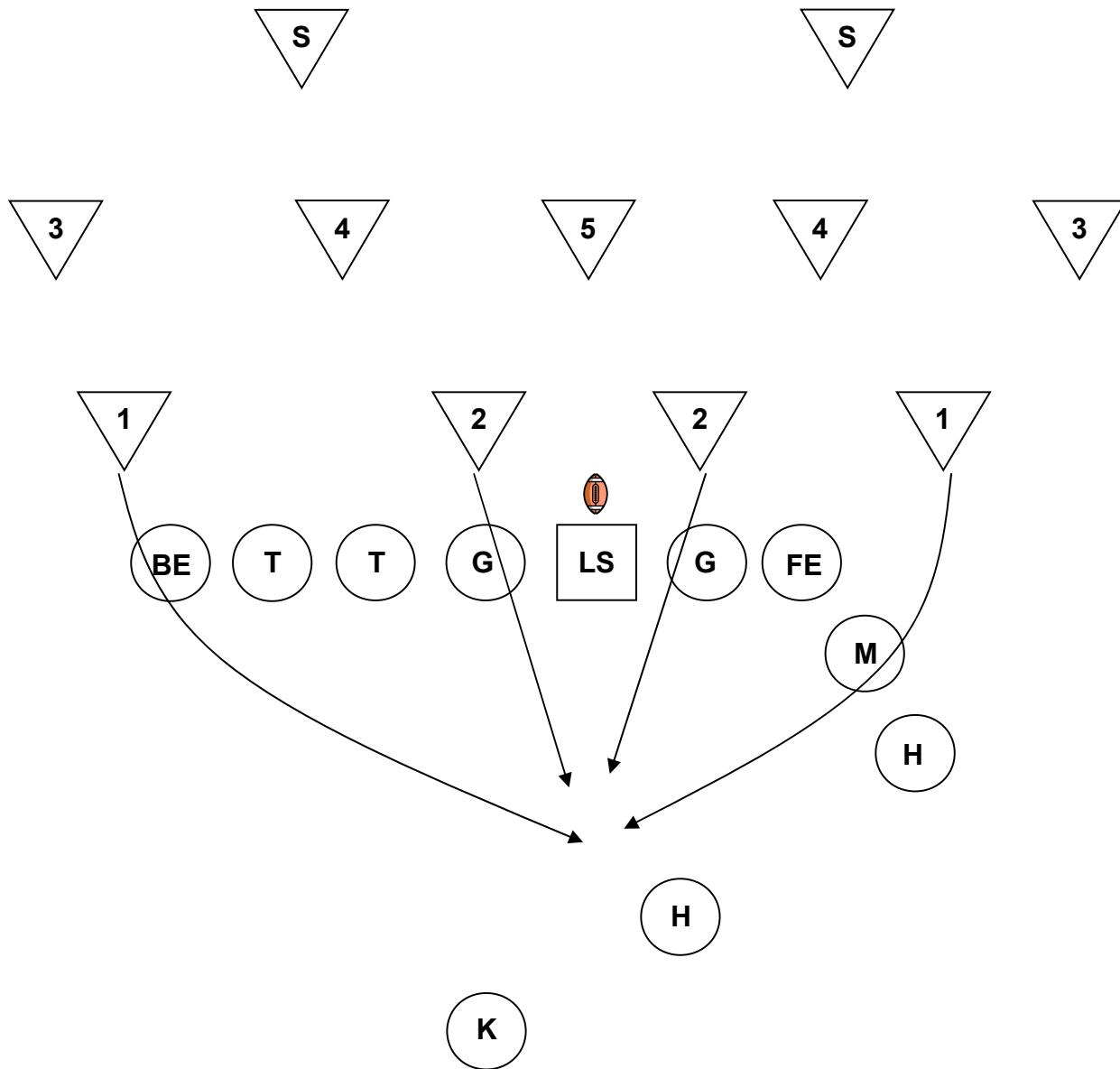
- #1 Safety Back Side
- #2 Hold Up & Freeze BE
- #3 Rush (C)
- #4 Rush (B)
- #5 Rush (A)

Block Side:

- #1 Rush (E)
- #2 Rush (D)
- #3 Rush (C)
- #4 Rush (B)
- #5 Rush (A)
- S Safety Block Side

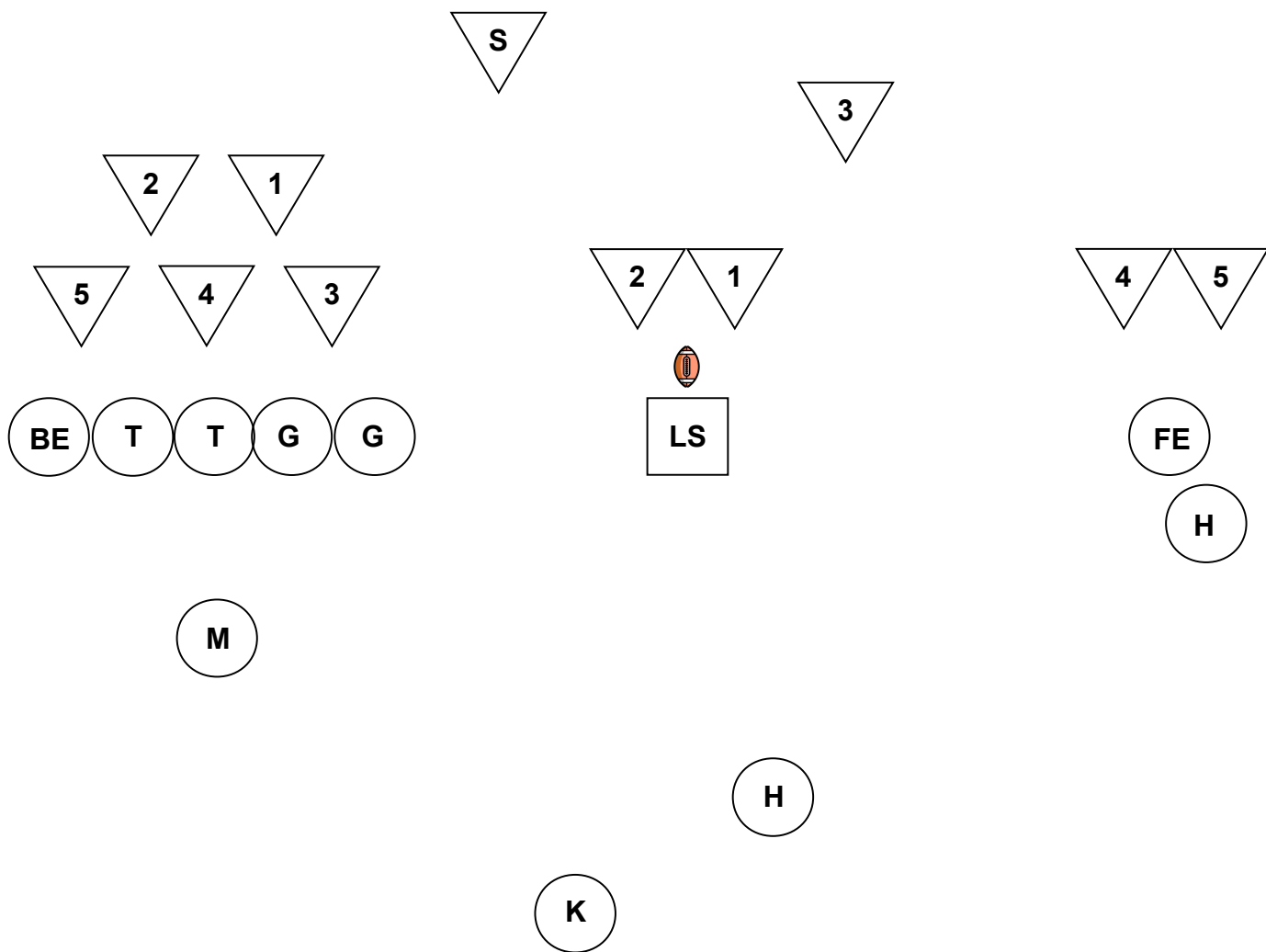


FG BLOCK SAFE vs. MONMOUTH



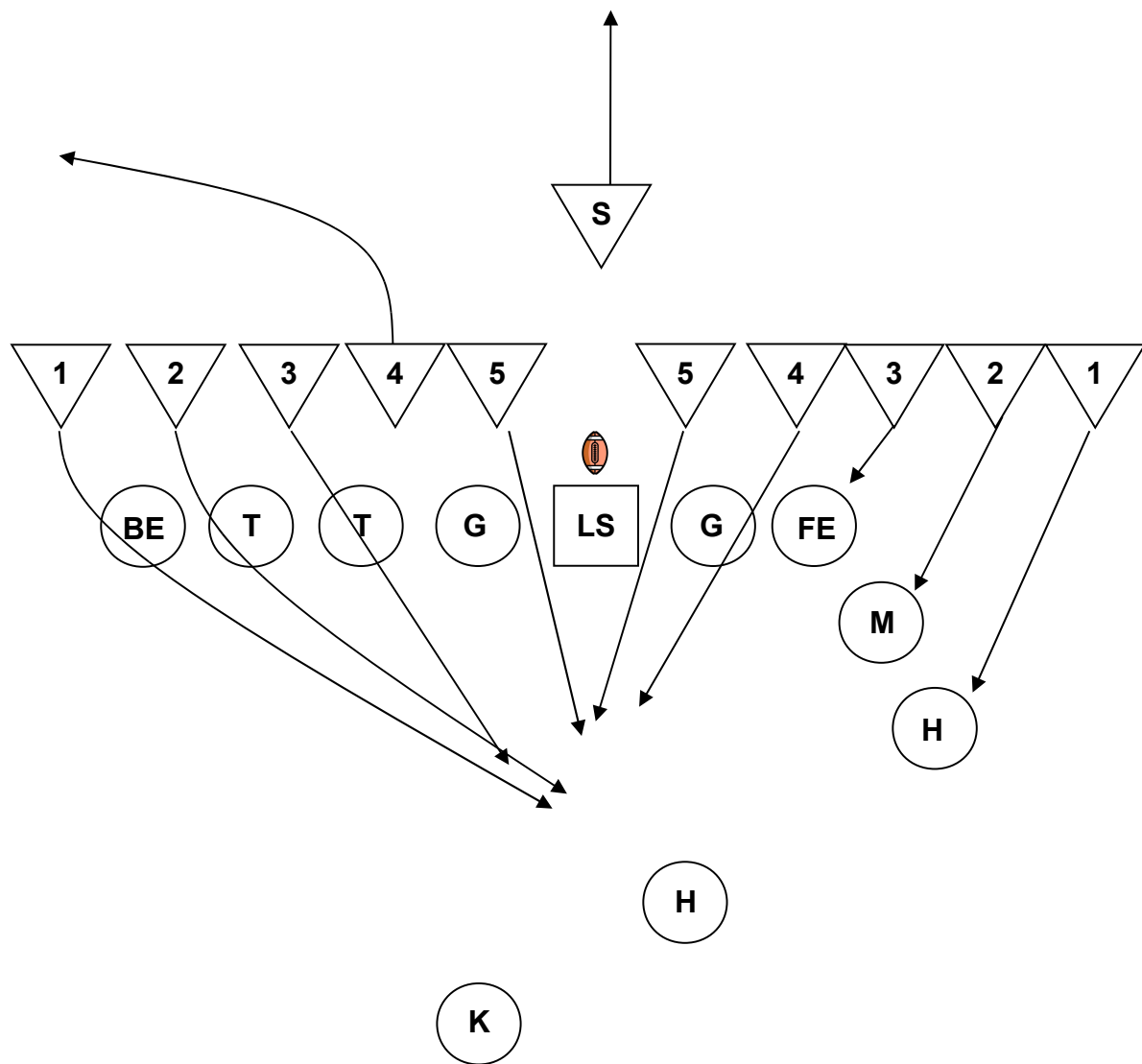


FG DEFENSE vs. GATE vs. MONMOUTH





FG BLOCK 5-5 OFF RIGHT vs. NEW HAMPSHIRE



Block Side:

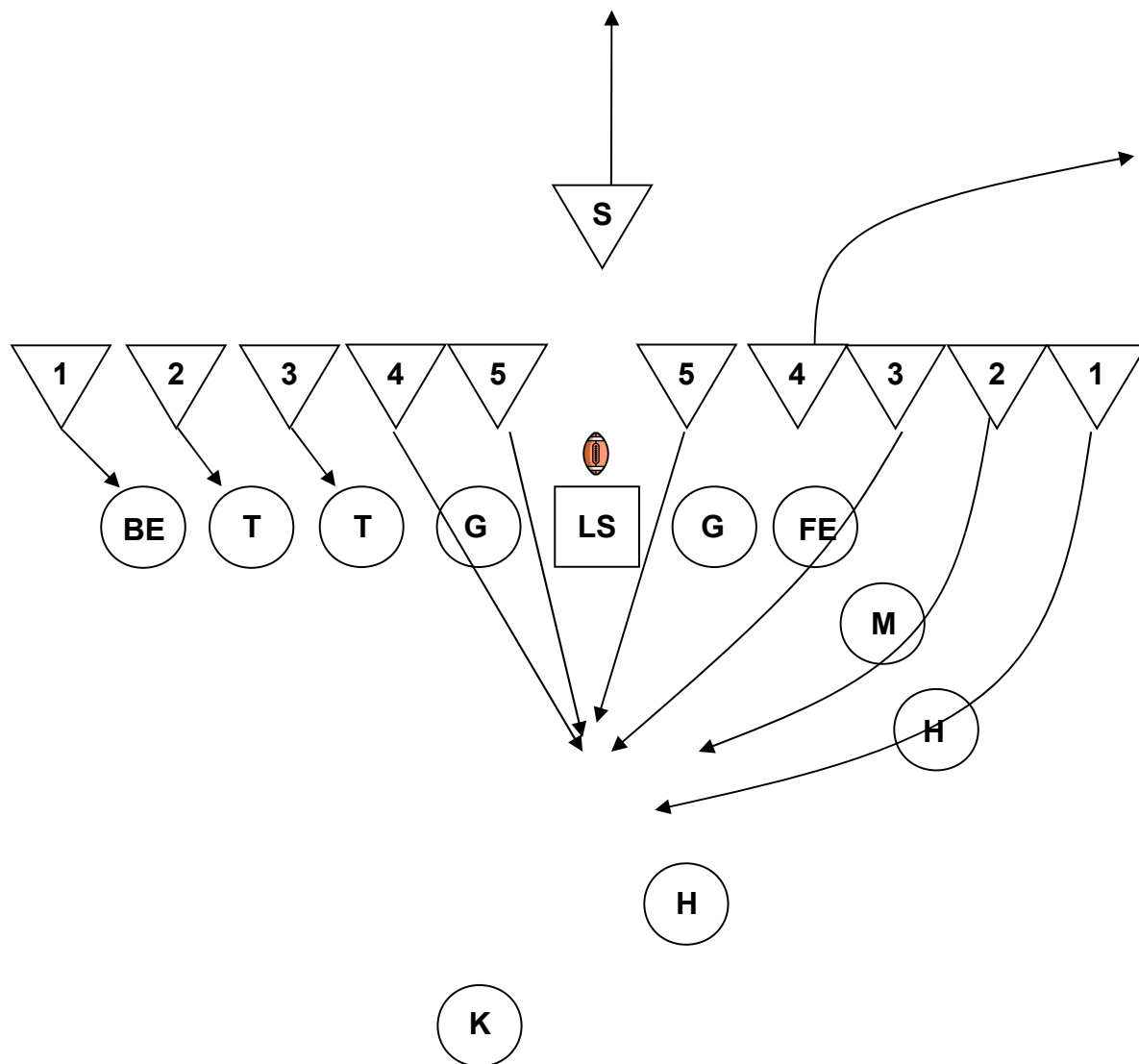
- #1 Rush (E)
- #2 Rush (D)
- #3 Rush (C)
- #4 Pop Out Safety Block Side
- #5 Rush (A)
- S Safety Middle

Back Side:

- #1 Hold Up & Freeze H
- #2 Hold Up & Freeze M
- #3 Hold Up & Freeze FE
- #4 Rush (B)
- #5 Rush (A)



FG BLOCK 5-5 OFF LEFT vs. NEW HAMPSHIRE



Back Side:

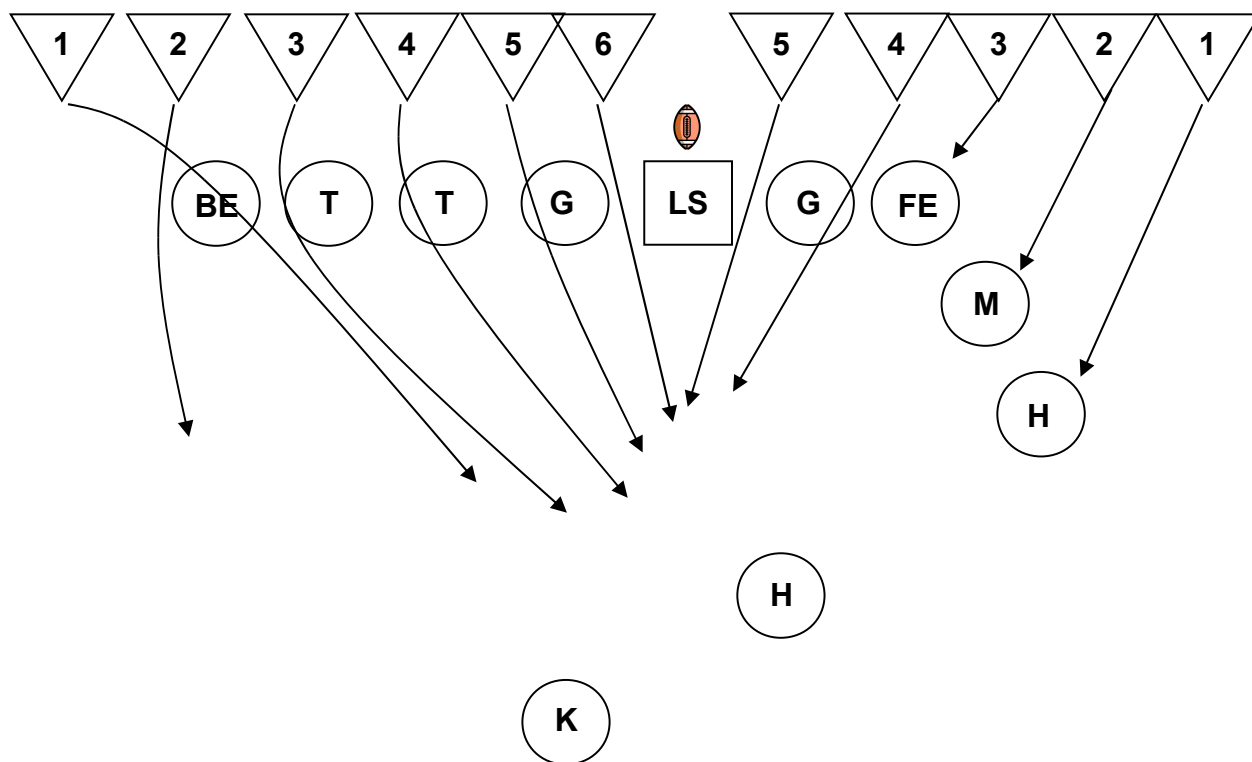
- #1 Hold Up & Freeze BE
- #2 Hold Up & Freeze T
- #3 Hold Up & Freeze T
- #4 Rush (B)
- #5 Rush (A)

Block Side:

- #1 Rush (E)
- #2 Rush (D)
- #3 Rush (C)
- #4 Pop Out Safety Block Side
- #5 Rush (A)
- S Safety Middle



FG BLOCK 6-5 LOOPER RIGHT vs. RICHMOND



Block Side:

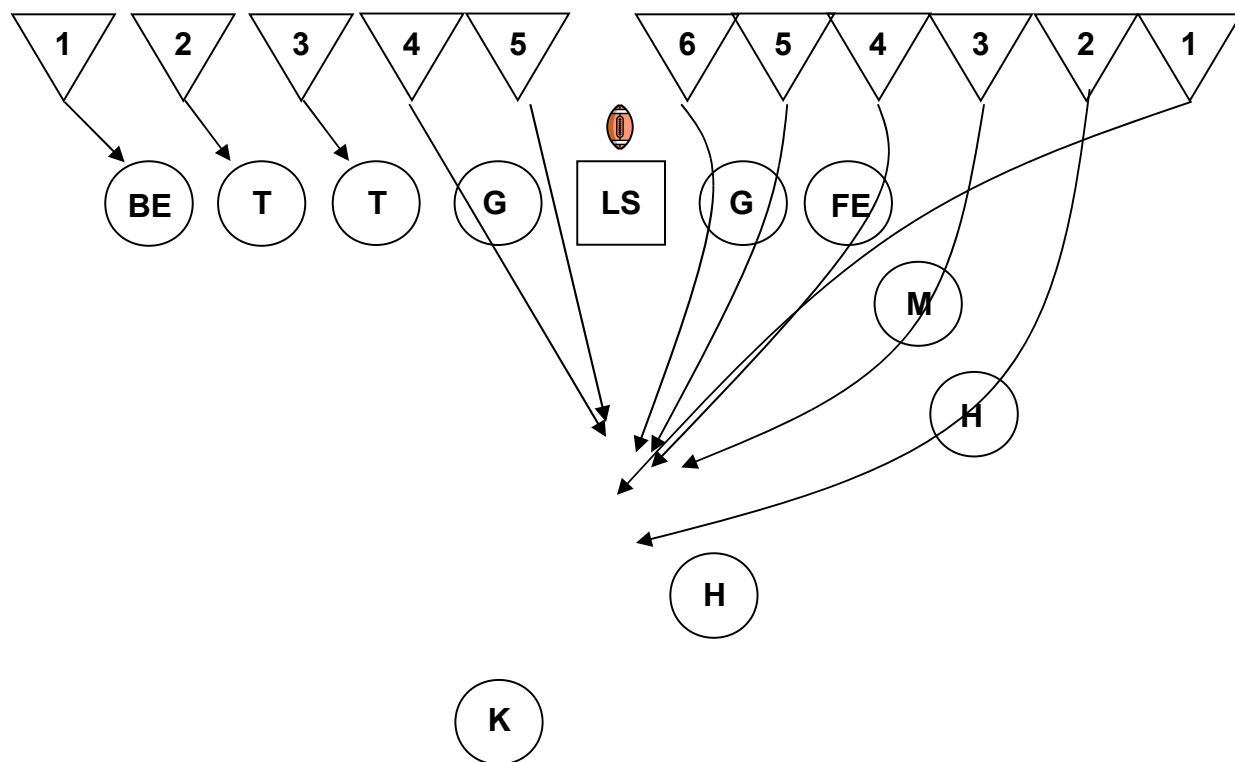
- #1 Loop In (D)
- #2 Rush & Attract BE
- #3 Rush (D)
- #4 Rush (C)
- #5 Blow Up G > Rush (B)
- #6 Blow Up G > Rush (A)

Back Side:

- #1 Hold Up & Freeze H
- #2 Hold Up & Freeze M
- #3 Hold Up & Freeze FE
- #4 Blow Up G > Rush (B)
- #5 Blow Up G > Rush (A)



FG BLOCK 5-6 LOOPER LEFT vs. RICHMOND



Back Side:

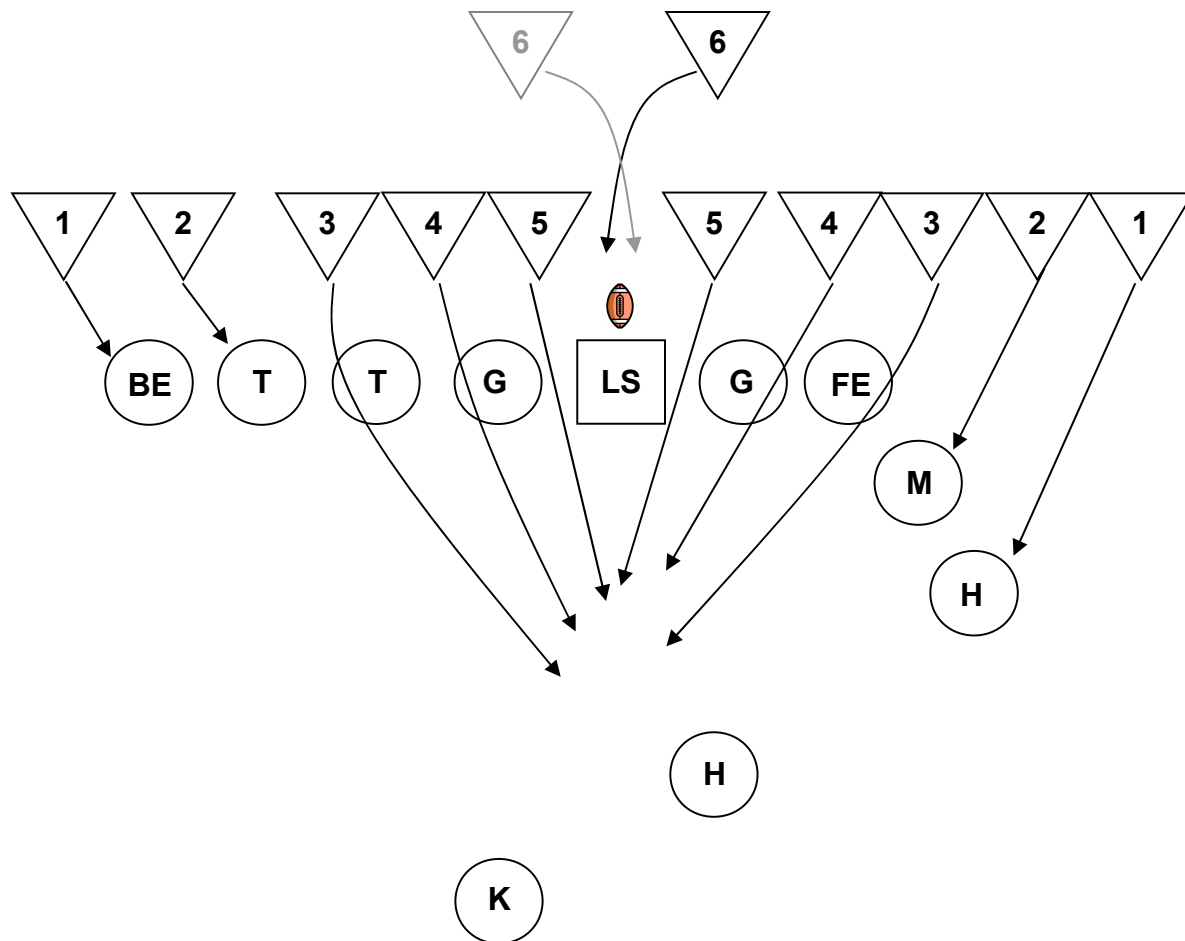
- #1 Hold Up & Freeze BE
- #2 Hold Up & Freeze T
- #3 Hold Up & Freeze T
- #4 Blow Up G > Rush (B)
- #5 Blow Up G > Rush (A)

Block Side:

- #1 Loop In (C)
- #2 Rush (E)
- #3 Rush (D) & Attract M
- #4 Rush (C)
- #5 Blow Up G > Rush (B)
- #6 Blow Up G > Rush (A)



FG BLOCK 5-5 OFF MIDDLE JUMPER vs. RICHMOND



Block Side:

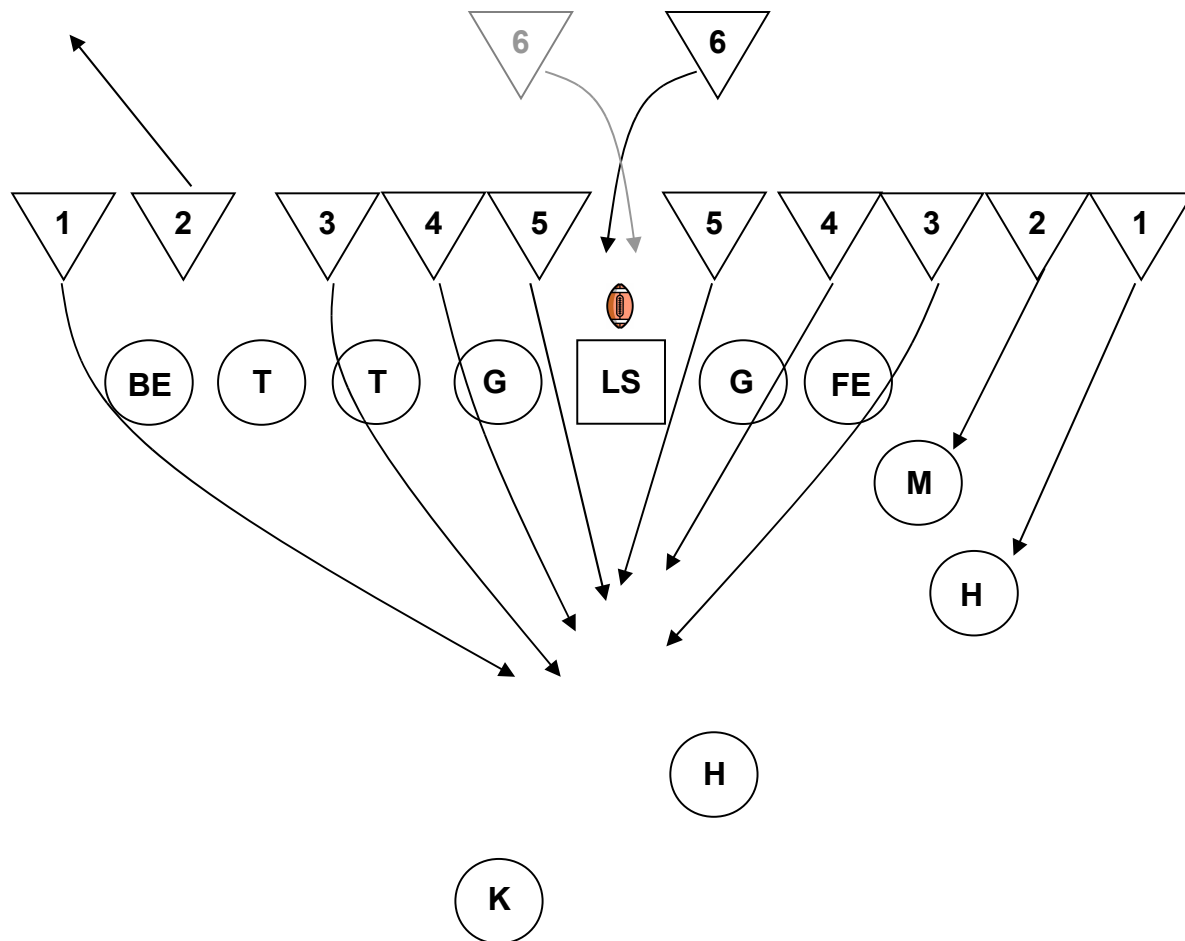
- #1 Hold Up & Freeze BE
- #2 Hold Up & Freeze T
- #3 Rush (C)
- #4 Blow Up G > Rush (B)
- #5 Blow Up G > Rush (A)
- #6 Middle Jumper (Right & Left)

Back Side:

- #1 Hold Up & Freeze H
- #2 Hold Up & Freeze M
- #3 Rush (C)
- #4 Blow Up G > Rush (B)
- #5 Blow Up G > Rush (A)



FG BLOCK 5-5 OFF MIDDLE JUMPER vs. NAVY



Block Side:

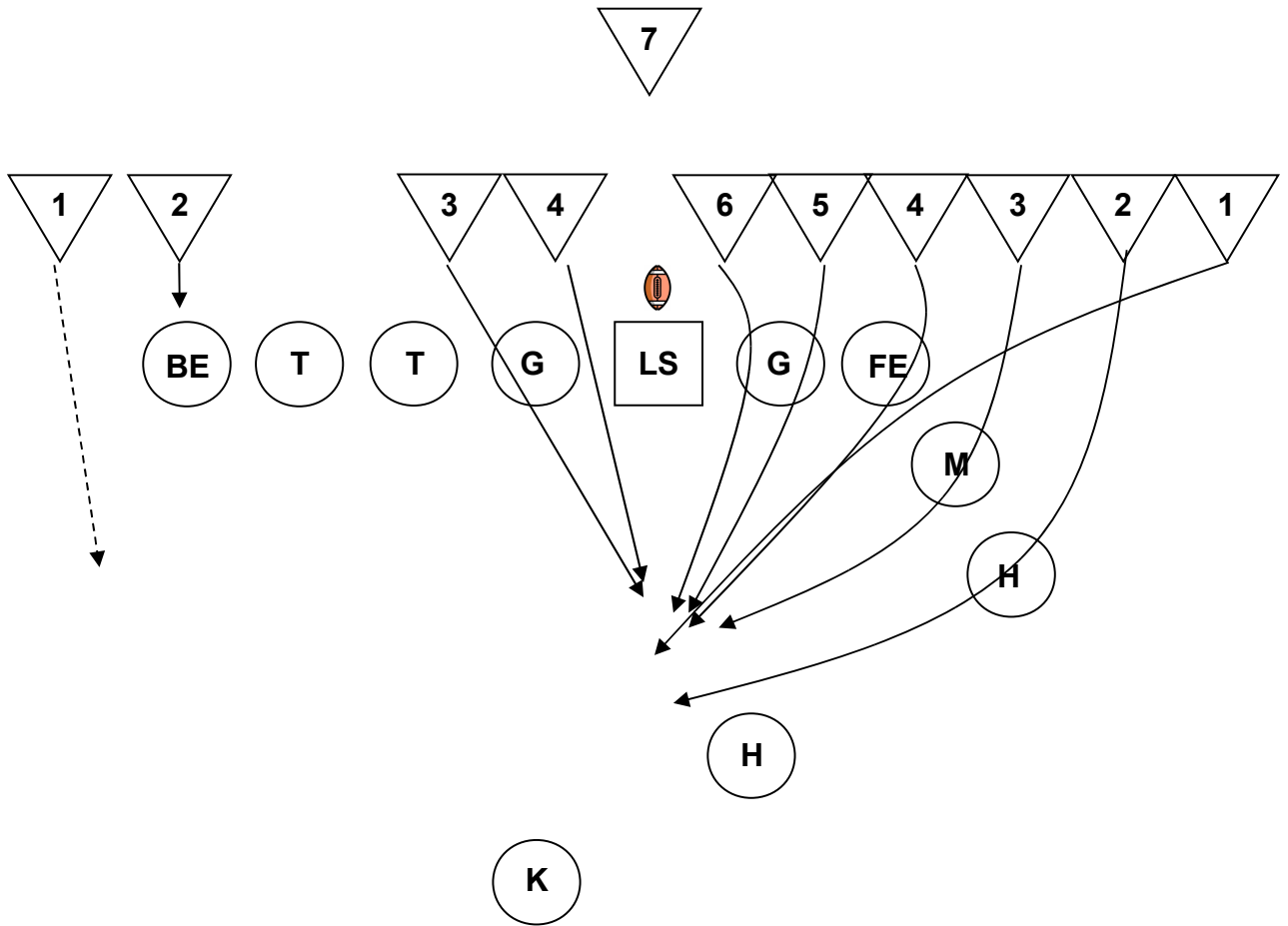
- #1 Rush (E)
- #2 Pop Out Safety
- #3 Rush (C)
- #4 Blow Up G > Rush (B)
- #5 Blow Up G > Rush (A)
- #6 Middle Jumper (Right & Left)

Back Side:

- #1 Hold Up & Freeze H
- #2 Hold Up & Freeze M
- #3 Rush (C)
- #4 Blow Up G > Rush (B)
- #5 Blow Up G > Rush (A)



FG BLOCK 4-6 OFF LOOPER LEFT vs. NAVY



Back Side:

- #1 Scoop & Score
- #2 Hold Up B
- #3 Blow Up G > Rush (B)
- #4 Blow Up G > Rush (A)

Block Side:

- #1 Loop In (C)
- #2 Rush (E)
- #3 Rush (D) & Attract M
- #4 Rush (C)
- #5 Blow Up G > Rush (B)
- #6 Blow Up G > Rush (A)
- #7 Safety



SPREAD PUNT

26

LB

WR

DB

DB

LB

RB

49

LB

LB

DB

SYSTEM ANALYSIS

The Bison have a very good

Spread Punt Unit. The Battery

Has very good operation times.

The Hang Time of the Punts

supports the Fan Switch Cov.

PROTECTION

Block Technique: Spread

Weakness: K&S Inside Pro

Block Point: 9Y

Overall Quality: Average

Pro team. Kick&Slide Pro is OK

No Bench Press Tech.!

LONG SNAPPER

#36 Ted Shea, JR

Very accurate & good Snapper!

Average Open Field Skills!

Snap 2 Catch: 0,67 – 0,91s

Ø 0,81s - Good Operations!

SHIFTS/MOTION

Muddle Huddle with a very fast

Line Up & Snap!

Gunner Over Formations!

SUMMARY

Above Average open field Unit.

Very Good Coverage & Field

Vision.

Punt Fake vs. UNH

Very experienced Punt Unit

with 3 Defensive Starters.

ANY BLOCKED PUNTS?

NOPE

How?

When?

KEY OBSERVATIONS

Punter is punting the Ball to his

Left Side. Punt goes always to the

Gunners Over Side.

Without Pressure #26 has great

Hang Times. Under Pressure he

likes to speed up & is losing his

Technique!

PUNTER

#26 Stuart Kenworthy, JR

Alignment: 14Y

LT/RT Footed: Right

Approach: Straight & Directional

Steps: 2 Steps

Get Off: 1,95 > 2.24 sec.

Hang Time: 2,89s – 4,82s

Punt Ø: 36,9Y

Sky Punt: Corner

Corner: OOB

Stats: 34-1253, Longest 53Y

Inside 20: 12

+50Y: 2

Touchbacks: 2

Fair Catch: 6

NET PUNT Ø

33,4Y

COVERAGE

HH: 2 Gunners & Longsnapper

Fan Switch Coverage

Punter: Safety 2nd Level

PP: Safety 1st Level



PUNT PERSONAL

#26

Stuart Kenworthy

Junior

Punter

Washington, DC/St. Albans



High School: Earned four letters as a punter and tight end in football and two letters as a first baseman in baseball at St. Albans School in Washington, DC...four-year starter in football for head coach Doug Boswell...earned first team All-Interstate Conference honors as a punter as a senior...

At Delaware: Former walk-on who begins his third season as the Blue Hens' starting punter...among the top returning and most experienced punters in the Colonial Athletic Association...will also serve as team's No. 3 kicker if needed...has a powerful leg and good size for a punter at 6-3 and 220 lbs...became one of the season's most interesting stories in 2005 when, as a walk-on practice player, he was thrust into the starting punter position when Mike Weber was injured vs. Towson...has played in 18 career games with 83 punts, 2,959 yards, and a 35.6 average...has placed 27 of his punts (32 percent) inside the opponent 20-yard line...has had just one punt blocked in two seasons...owns four career punts over 50 yards, including a career-long boot of 53 vs. Massachusetts as a freshman... averaged 30.1 yards per punt on six attempts in Blue-White Spring Game in April...**2006:** Earned second letter and appeared in all 11 games as team's No. 1 punter...punted 46 times for 1,709 yards and 37.2 average to rank fifth among all Atlantic 10 punters and No. 61 nationally...16 of his punts were fair caught, including all four vs. West Chester...punted season-high eight times for 307 yards (38.4 avg.) vs. Albany, including two 50-yarders, three fair catches, and three inside the 20-yard line...averaged over 40 yards per punt four times, vs. Villanova (41.0), West Chester (40.8), Northeastern (40.7), and New Hampshire (40.4)...had a season-long 51-yard punt vs. Albany and 50-yarders vs. Albany and Richmond...team went 5-6 under head coach K.C. Keeler... averaged 35.5 yards on four punts in Blue-White spring game...**2005:** Walk-on true freshman who did not even join the team until early September...was punting and serving as a scout team defensive lineman when he was thrust into starting punter position in the fifth week of the season after three-year starter Mike Weber injured his knee vs. Towson...performed well despite youth and inexperience...was team's punter in the final seven games of the season and averaged 35.7 yards on 35 punts...had two touchbacks, 11 fair catches, and 14 land inside the opponent 20-yard line...had just one punt blocked (vs. William & Mary)...long punt of season was a 53-yarder vs. Massachusetts...averaged 34.0 yards on eight punts in collegiate debut vs. Hofstra, including a 49-yarder on his first kick and a 19-yarder on the run after he tracked down a snap that went over his head near the end zone...also averaged 44.2 yards on five punts vs. Massachusetts for which he was named Blue Hen Touchdown Club Special Teams Player of the Week...averaged 37.0 yards on four punts vs. Maine and 34.4 yards on four punts vs. James Madison...one of eight true freshmen to see action for the team...led squad to 6-5 record.

Personal: Stuart Andrew Kenworthy...born August 24, 1986 in New York, NY...son of Stuart and Frances Kenworthy...has two sisters...elementary education major at Delaware...would like to pursue a career with the Federal Bureau of Investigation...father is an Episcopalian priest...has worked on the grounds crew at his alma mater, St. Albans School during the summer...enjoys backpacking and wilderness trips in his spare time.

#36 Ted Shea

Long Snapper

Junior

Holder

Wilmington, DE/Tatnall



High School: Three-sport standout at Tatnall School in Wilmington, DE where he played football, lacrosse, and basketball...captained each team...four-year starter in football for head coach and former Delaware tight end Jody Russell...earned first team all-conference honors as a safety and linebacker three times

At Delaware: Valuable member of the Blue Hen special teams unit...walk-on who is believed to be one of the few college players at any level to double as a deep snapper on punts and holder on placements...will handle both duties for the second straight year this fall...dependable deep snapper who has yet to have a punt blocked...had one tackle in Blue-White Spring Game in April...**2006:** Earned letter in first varsity season as he handled all deep snapping duties on punts and holding responsibilities on placements in all 11 games...Delaware did not have a punt blocked all season in 46 attempts and the Blue Hens converted 35 of 37 extra points and 8 of 14 field goals...team went 5-6 under head coach K.C. Keeler...

At Northeastern: 2005: Attended Northeastern but did not play football...was a member of the Northeastern club lacrosse team.

Personal: Edward Thomas "Ted" Shea...born May 15, 1985...son of Thomas and Mary Shea...has two older sisters...mother is a graduate of Delaware...business major at Delaware...works as a laborer during the summer...cousin, Mick Purzycki, is currently a sophomore wide receiver for Delaware and his uncle, Mike Purzycki, was a standout wide receiver at Delaware in 1963-66, earning first team All-Middle Atlantic honors as a senior and recording 98 receptions for 1,390 yards for his career.



PUNT STATS

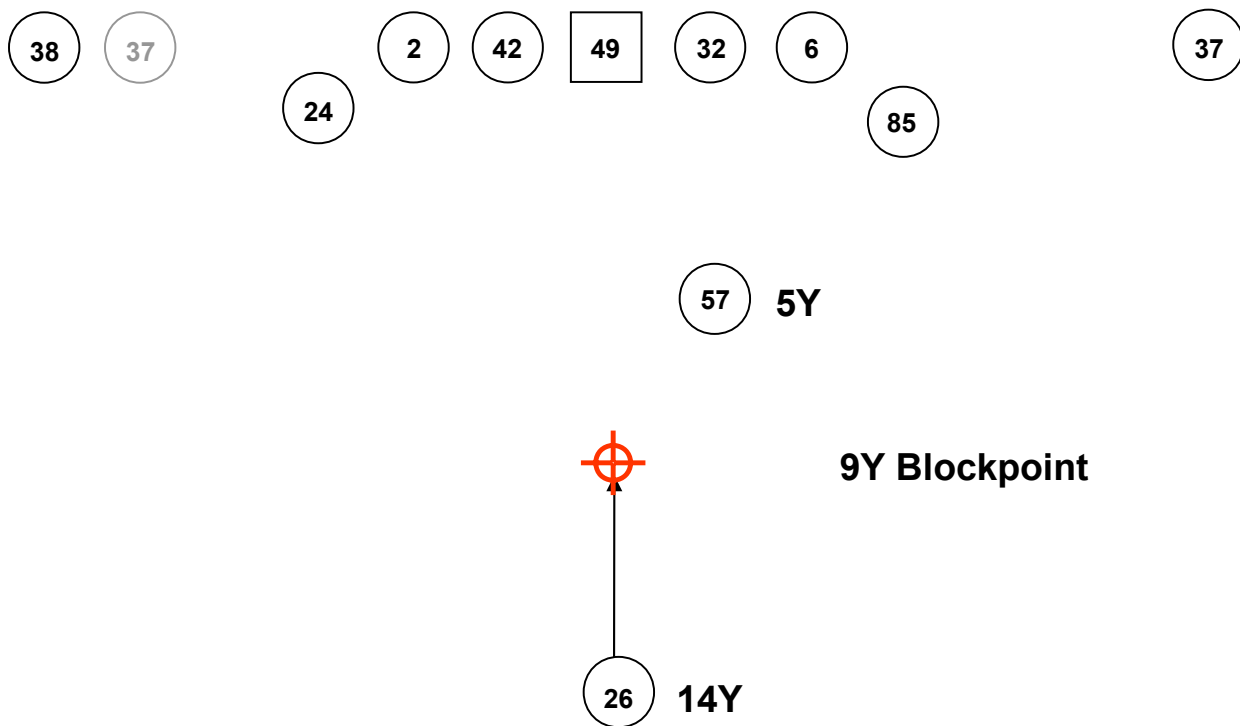
PUNTING	No.	Yds	Avg Long	TB	FC	I20	Blkd	
Stuart Kenworthy	34	1253	36.9	53	2	6	12	0
Total.....	34	1253	36.9	53	2	6	12	0
Opponents.....	45	1760	39.1	59	3	6	13	0

PUNTING	G	No.	Yards	Avg/P	PR	Avg	TB	Net/P
1. Towson.....	11	48	1797	37.4	63	1.3	0	36.1
2. Richmond.....	11	37	1425	38.5	102	2.8	2	34.7
3. Villanova.....	11	60	2266	37.8	170	2.8	3	33.9
4. Delaware.....	11	34	1253	36.9	76	2.2	2	33.4
5. New Hampshire.....	11	44	1685	38.3	96	2.2	6	33.4
6. Maine.....	11	72	2707	37.6	171	2.4	7	33.3
7. Hofstra.....	11	51	1832	35.9	129	2.5	2	32.6
8. Northeastern.....	11	45	1774	39.4	166	3.7	8	32.2
9. James Madison.....	11	35	1262	36.1	122	3.5	1	32.0
10. Massachusetts.....	11	52	1884	36.2	142	2.7	9	30.0
11. Rhode Island.....	11	60	2198	36.6	349	5.8	4	29.5
12. William and Mary....	11	46	1509	32.8	336	7.3	0	25.5

PUNTING	Team	Cl	G	Punts	Yds	Long	Avg
1. Bryan Giannecchini..	URI	SR	11	43	1761	68	41.0
2. Tom Bishop.....	UNH	JR	11	42	1663	77	39.6
3. Ron Conway.....	NU	SO	11	45	1774	65	39.4
4. Brian Radford.....	RICH	SO	11	37	1425	52	38.5
5. Kash Kiefer.....	MAIN	JR	11	71	2707	82	38.1
6. Brett Arnold.....	UMAS	JR	11	49	1864	68	38.0
7. Zach Ugarte.....	VU	SO	11	60	2266	59	37.8
8. Bill Shears.....	TOWS	SO	11	48	1797	63	37.4
9. Jason Pritchard.....	JMU	JR	11	33	1235	70	37.4
10. Chris Hanly.....	HOF5	SR	9	37	1373	51	37.1



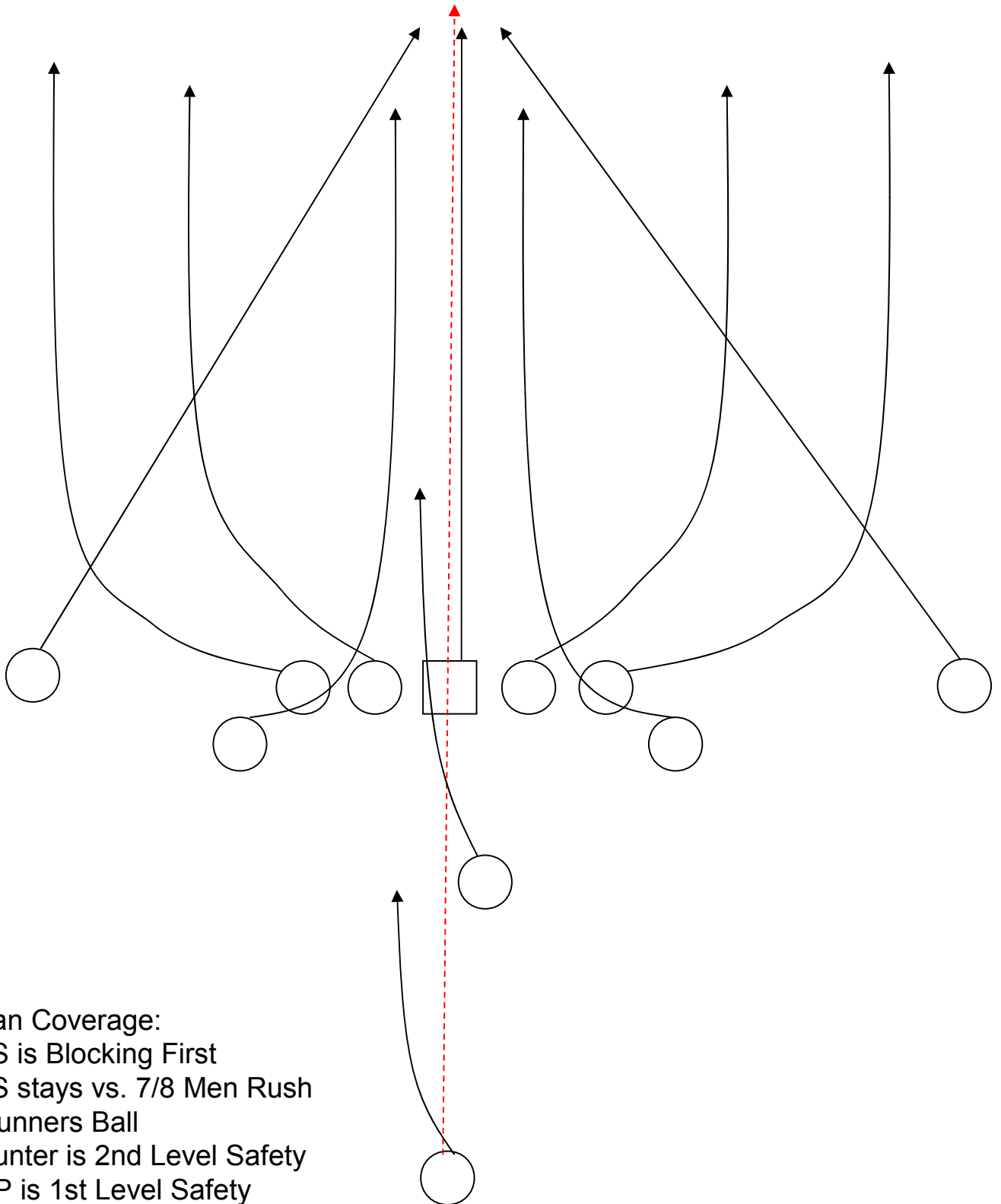
PUNT PERSONAL



Pos.	#	Pos.	Name	Class
Left Gunner	38	DB	Marvin McKinnie	JR
Left Wing	24	DB	Fred Andrew	JR
Left Tackle	2	LB	Johnathon Smith	JR
Left Guard	42	LB	Benard Makumbi	RFR
Long Snapper	49	TE	Zack Reed	FR
Right Guard	32	RB	Matt Ruggiero	JR
Right Tackle	6	LB	Brain Brown	JR
Right Wing	85	WR	Martain Johnston	RFR
Right Gunner	37	DB	Tyrone Grant	FR
Pro	57	LB	Erik Johnson	JR
Punter	26		Stuart Kenworthy	JR



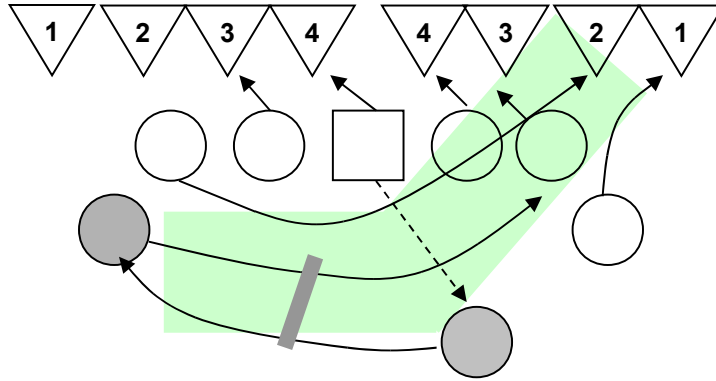
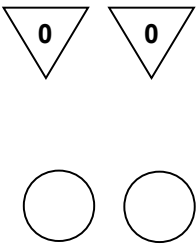
SPREAD PUNT FAN SWITCH COVERAGE



Fan Coverage:
LS is Blocking First
LS stays vs. 7/8 Men Rush
Gunners Ball
Punter is 2nd Level Safety
PP is 1st Level Safety
Tackles > Outside Contain
Wings > Switch In



PUNT FAKE vs. UNH



Direct Snap to PP
Reverse Hand Off to LW
LT is pulling
Punter Bad Snap Fake

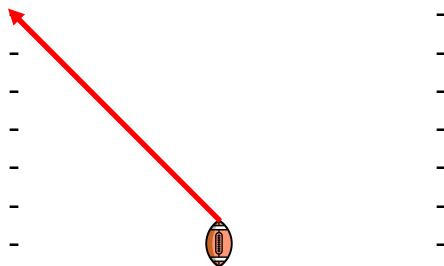


4 & 5
Left Hash
Gain: -1 Yard

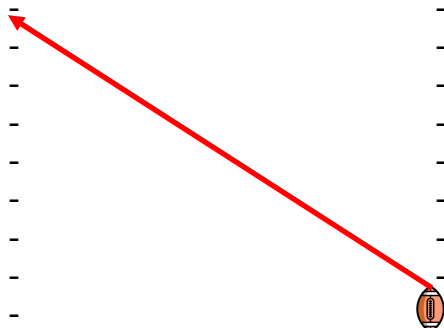


PUNT OPERATIONS

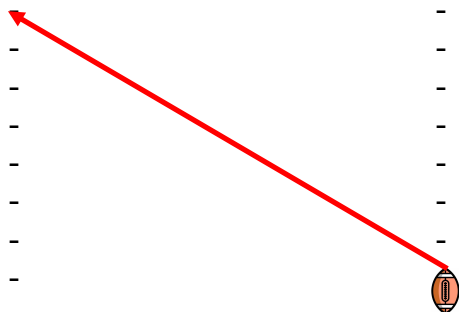
Opp: MONM
Get Off: 0,77s – 1,96s
Hangtime: 4,40s
Distance: 42Y
Field: UD42 > MU16
Return: 0Y



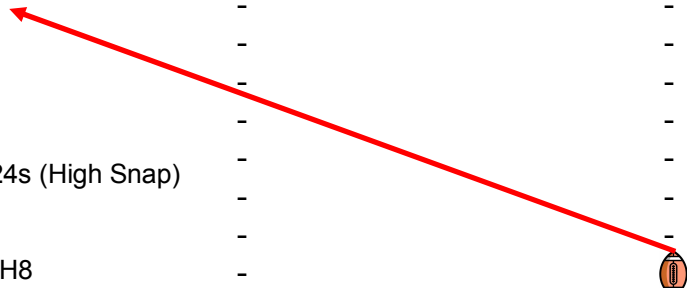
Opp: MONM
Get Off: 0,81s – 2,19s
Hangtime: 3,12s
Distance: 31Y
Field: MU40 > MU9
Return: 1Y



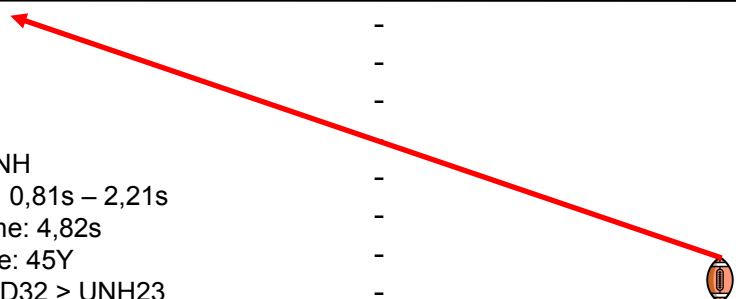
Opp: MONM
Get Off: 0,77s – 1,99s
Hangtime: 4,13s
Distance: 46Y
Field: UD23 > MU31
Return: -3Y



Opp: UNH
Get Off: 0,79s – 2,24s (High Snap)
Hangtime: 3,03s
Distance: 37Y
Field: UNH45 > UNH8
Return: 1Y



Opp: UNH
Get Off: 0,81s – 2,21s
Hangtime: 4,82s
Distance: 45Y
Field: UD32 > UNH23
Return: Fair Catch



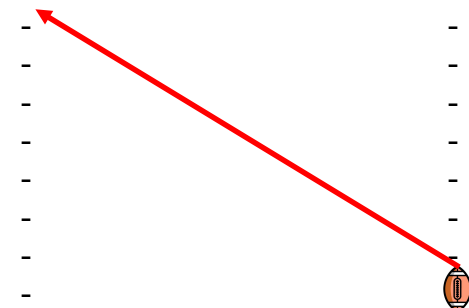


PUNT OPERATIONS

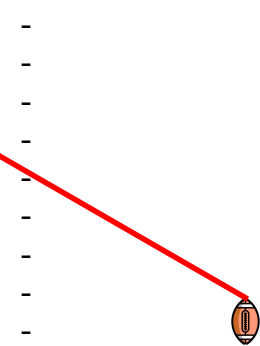
Opp: UNH
Get Off: 0,98s – 2,14s (High Snap)
Hangtime: 2,89s
Distance: 28Y
Field: UD34 > UNH38
Return: 4Y



Opp: NU
Get Off: 0,99s – 2,11s (High Snap)
Hangtime: 2,49s
Distance: 32Y
Field: UD26 > NU42
Return: Downed



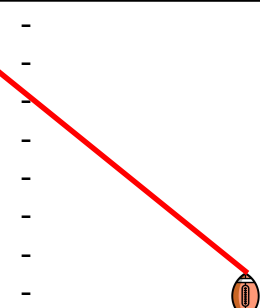
Opp: NAVY
Get Off: 0,67s – 1,78s (Backed Up)
Hangtime: 3,16s
Distance: 37Y
Field: UD2 > UD39
Return: 11Y (+ Personal Foul)



Opp: NAVY
Get Off: 0,81s – 2,03s
Hangtime: 4,24s
Distance: 37Y
Field: N37 > N0
Return: Touchback



Opp: JM
Get Off: 0,78s – 2,04s
Hangtime: 3,02s
Distance: 30Y
Field: UD47 > JM23
Return: Downed





PUNT OPERATIONS

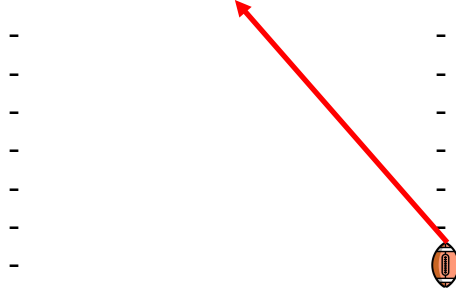
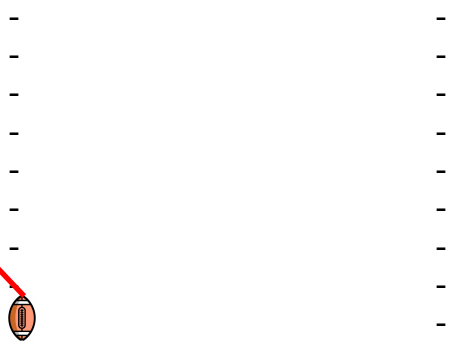
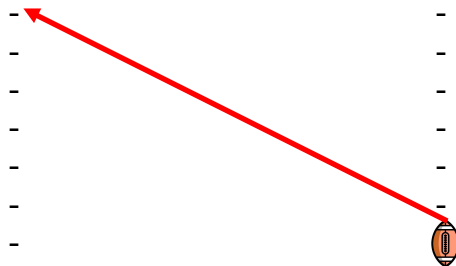
Opp: JM
Get Off: 0,88s – 2,06s
Hangtime: 4,39s
Distance: 49Y
Field: UD44 > JM7
Return: Fair Catch

Opp: JM
Get Off: 0,84s – 1,99s
Hangtime: 3,81s
Distance: 44Y
Field: UD26 > JM30
Return: 15Y

Opp: JM
Get Off: 0,75s – 2,03s
Hangtime: 2,31s
Distance: 15Y
Field: JM44 > JM29
Return: OOB

Opp: JM
Get Off: 0,88s – 1,95s
Hangtime: 2,98s
Distance: 33Y
Field: UD36 > JM31
Return: 9Y

Opp: RICH
Get Off: 0,86s – 2,02s
Hangtime: 3,87s
Distance: 38Y
Field: UD37 > RI25
Return: 9Y





PUNT OPERATIONS

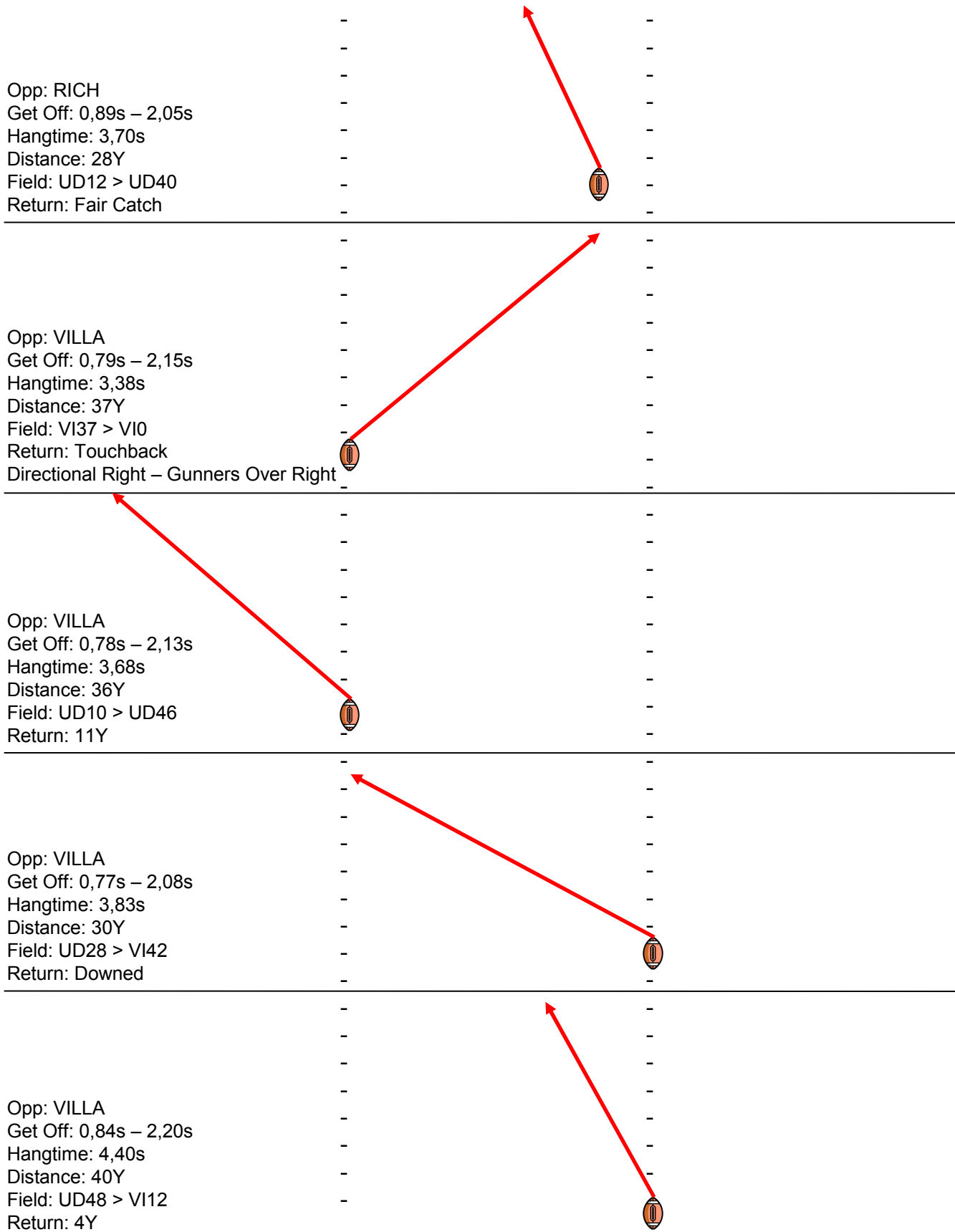
Opp: RICH
Get Off: 0,89s – 2,05s
Hangtime: 3,70s
Distance: 28Y
Field: UD12 > UD40
Return: Fair Catch

Opp: VILLA
Get Off: 0,79s – 2,15s
Hangtime: 3,38s
Distance: 37Y
Field: VI37 > VI0
Return: Touchback
Directional Right – Gunners Over Right

Opp: VILLA
Get Off: 0,78s – 2,13s
Hangtime: 3,68s
Distance: 36Y
Field: UD10 > UD46
Return: 11Y

Opp: VILLA
Get Off: 0,77s – 2,08s
Hangtime: 3,83s
Distance: 30Y
Field: UD28 > VI42
Return: Downed

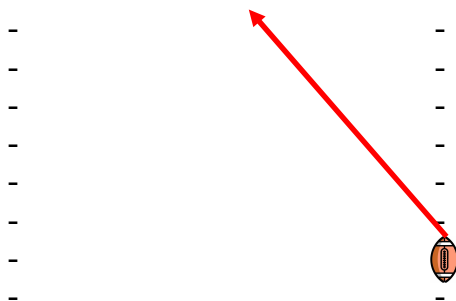
Opp: VILLA
Get Off: 0,84s – 2,20s
Hangtime: 4,40s
Distance: 40Y
Field: UD48 > VI12
Return: 4Y



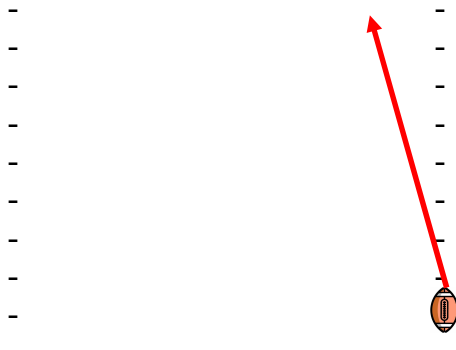


PUNT OPERATIONS

Opp: VILLA
Get Off: 0,81s – 2,15s
Hangtime: 4,63s
Distance: 36Y
Field: VI49 > VI13
Return: Fair Catch

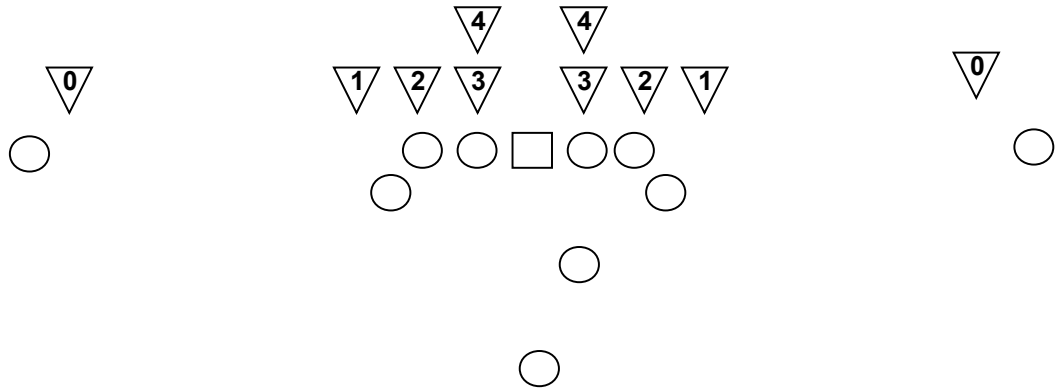


Opp: VILLA
Get Off: 0,80s – 2,06s
Hangtime: 4,49s
Distance: 51Y
Field: UD09 > VI40Y
Return: 8Y





PUNT DEFENSE TEAM



SYSTEM ANALYSIS

The Blue Hens set up the Return first. They shown a 4-4 Off & a 3-5 Sugar In Look. Rush 3-5 Sugar In Look! Return is always Middle Return!

RETURNS

Block Tech: Hold Up, Wall Off
Weakness: Open Field Blocks
Block Point:
Overall Quality: Average
Blocking & Return Team!

BLOCKS

NOPE

Monmouth Bad Snap Rush
James Mad. Bad Catch Rush

SHIFTS/MOTION

4-4 Off > 3-5 Sugar In!

SUMMARY

Average Punt Defense Unit with a Good and aggressive Get Off. Hold Up on LOS is good. The Open Field Blocking Abilities are poor. The CB are weak in covering the Gunners. **#101 in the Nation!**

ANY BLOCKED PUNTS?

NOPE

How?

When?

KEY OBSERVATIONS

Villa: 5 Return, Richmond: 3 Return,

JM: 4 Return, Navy: No Punt Def.

NE: 4 Return, UNH: 3 Ret./3 Rush

Mon: 5 Return, 3 Rush

REVERSE

NOPE

RETURNERS

#17 Aaron Love, WR (JR)

Alignment: Head Up Ball

Acceleration: Great

Speed: Great

Field Ability: Great

Courage: Good

Overall Ability: Great Punt Returner!

Will to make things happen!

STATS

12-75Y

Ø 6,2Y

TD 0, Longest 19Y

TOTALS

14-72Y

Ø 5,1Y, TD 0, Longest 19Y



PERSONAL PUNT RETURNER

#17
Aaron Love
Junior
Wide Receiver
Detroit, MD/Southfield



High School: Two-year starter in football at Southfield High School

for coach David Reese... played wide receiver and kick returner.....recorded nearly 2,000 return yards his final two seasons...captain of football team as a senior

At Delaware: Double threat at both wide receiver and on punt returns as a junior...All-American and All-Colonial Athletic Association candidate for the Blue Hens...one of the league's most dangerous big-play threats...the top returning receiver in the CAA for both receptions and receiving yards per game and No. 4 among returning CAA punt return specialists...two-year letterwinner who will start at wide receiver and return punts for the third straight year...can also serve as a holder on placements if needed...one of the smallest members of the team but also one of the fastest and most elusive in the open field...also an effective downfield blocker...can also throw the ball and could fill in as an emergency quarterback if needed... career punt return average of 10.5 ranks No. 3 all-time at Delaware with 38 returns ranking No. 11 and 398 yards ranking No. 8...

2006: One of the top double threats in the Atlantic 10... 58 receptions were the seventh highest single season total in UD history and his 5.8 receptions per game ranked No. 3 all-time...carried three times for 10 yards...returned 11 punts for 112 yards and a 10.2 average to rank No. 5 in the Atlantic 10

2005: Enjoyed a solid collegiate debut as a redshirt freshman...moved into a starting spot at wide receiver vs. Towson and went on to start the final seven contests...led all wide receivers with 24 receptions for 248 yards (10.3 avg.) and two touchdowns... earned third team All-Atlantic 10 honors as a punt returner after he averaged 10.6 yards per return...returned 27 punts for 286 yards (10.6 avg.) with a long return of 54 yards...ranked third in the Atlantic 10 and 27th in NCAA I-AA in punt return average...286 return yards were the fourth highest single season mark in UD history and his 10.6 average was sixth best in UD history...

2004: Did not see game action and retained freshman eligibility...team went 9-4, won the Atlantic 10 title, and advanced to the NCAA I-AA quarterfinals.

Personal: Aaron Christopher Love...born Dec. 1, 1986...son of Michael and Alisha Love...criminal justice major at Delaware...one of four children...mother played college volleyball at School Craft College...worked at former NFL All-Pro Jerome Bettis Football Camp in Detroit in summer of 2005.

#14
Jon Heydt
Junior
Wide Receiver
Newark, DE/St. Mark's



High School: Four-year standout for coach Vinnie Scott at nearby St. Mark's High School... three-time All-State selection who played wide receiver, running back, and defensive back during his career...three-time All-Catholic League selection... 800 yards in returns...scored 47 touchdowns during his career.

At Delaware: Fourth-year team member as a junior and a two-year letterwinner...will again be a key member of the Blue Hen wide receiver corps that often goes three and four wide... versatile athlete who can also handle holder responsibilities on field goal and extra point attempts and can also return punts if needed... **2006:** Earned second letter as a backup wide receiver... appeared in eight games overall and got starting nod in four contest

2005: Earned first varsity letter as a redshirt freshman...appeared in seven games, all in a reserve role at wide receiver...

2004: Did not see game action and retained freshman eligibility...team went 9-4, won the Atlantic 10 title, and advanced to the NCAA I-AA quarterfinals.

Personal: William Jonathan "Jon" Heydt ("hite")...born Aug. 20, 1985...son of William and Karen Heydt...history major at Delaware...has two older sisters...sister, Lauren, is a Delaware graduate...father, wrestled in college at Widener (PA) University...is an avid skier...was diagnosed with Hodgkin's lymphoma as a freshman at St. Mark's High School but disease went into remission after chemotherapy...has started to become active with Leukemia & Lymphoma Society programs within the state of Delaware.



PUNT RETURN STATS

PUNT RETURNS	No.	Yds	Avg	TD	Long
Aaron Love	12	75	6.2	0	19
Jon Heydt	2	-3	-1.5	0	0
Total.....	14	72	5.1	0	19
Opponents.....	15	76	5.1	0	15

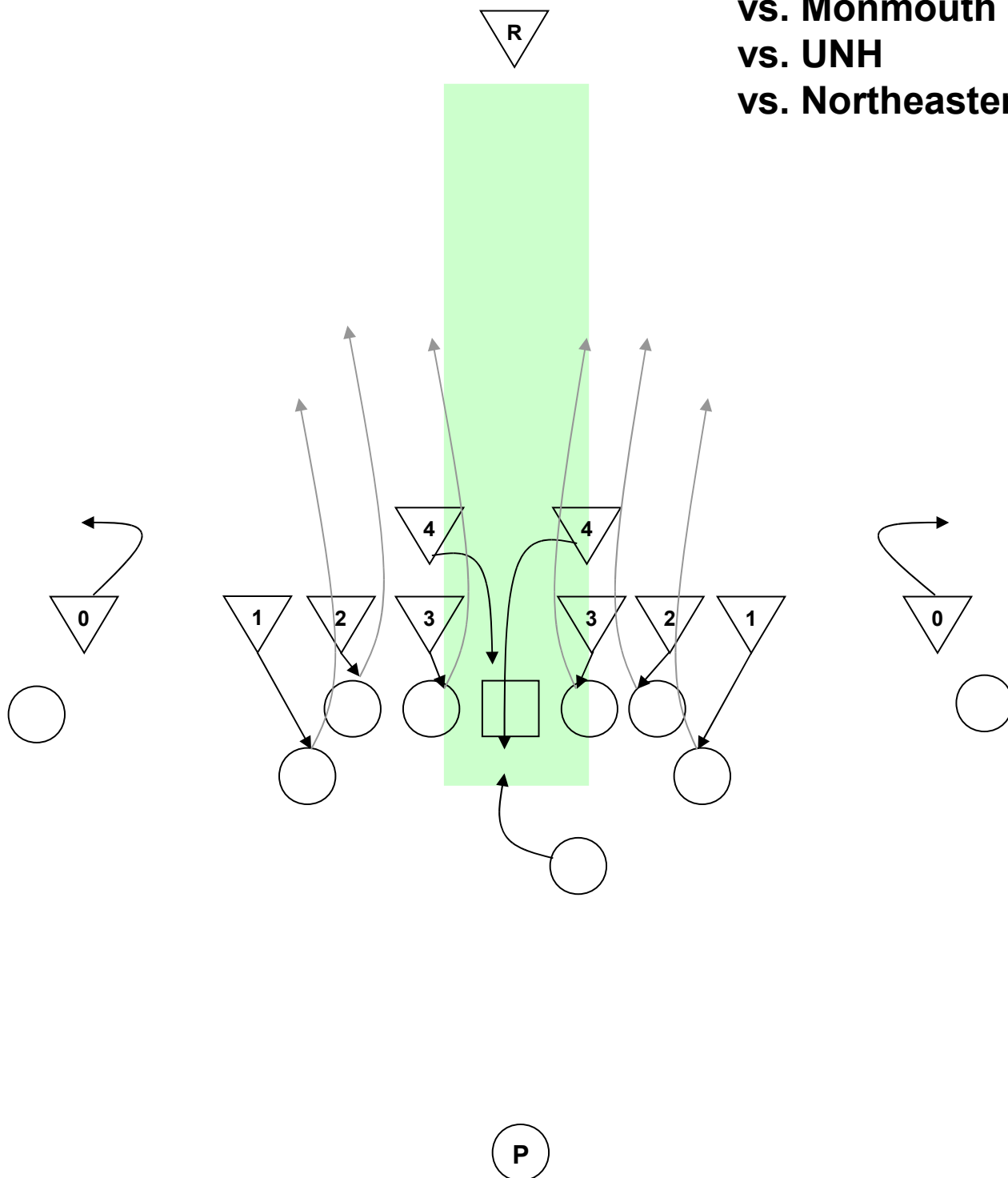
PUNT RETURN AVG	G	Ret	Yds	TD	Avg
1. Hofstra.....	11	21	308	0	14.7
2. Richmond.....	11	24	304	3	12.7
3. Maine.....	11	22	206	1	9.4
4. Massachusetts.....	11	24	221	1	9.2
5. New Hampshire.....	11	18	157	0	8.7
6. James Madison.....	11	22	169	0	7.7
7. Villanova.....	11	25	192	0	7.7
8. Northeastern.....	11	12	84	1	7.0
9. Delaware.....	11	14	72	0	5.1
10. Towson.....	11	23	117	0	5.1
11. William and Mary....	11	12	47	0	3.9
12. Rhode Island.....	11	13	50	0	3.8

PUNT RETURN AVG	Team	Cl	G	Ret	Yds	TD	Long	Avg
1. Anthony Nelson.....	HOF	FR	11	20	312	0	77	15.6
2. Derek Hatcher.....	RICH	SO	10	18	234	1	66	13.0
3. Matthew Szczur.....	VU	FR	11	17	165	0	36	9.7
4. J.J. Moore.....	UMAS	SR	11	23	201	1	58	8.7
5. Aaron Love.....	DELA	JR	10	12	75	0	19	6.2
6. Marcus Lee.....	TOWS	JR	11	17	101	0	21	5.9



PUNT MIDDLE RETURN (4-4 OFF)

vs. Monmouth
vs. UNH
vs. Northeastern



4-4 Off Look

#4: Left #4 Hold Up LS / Right #4 Hold Up PP

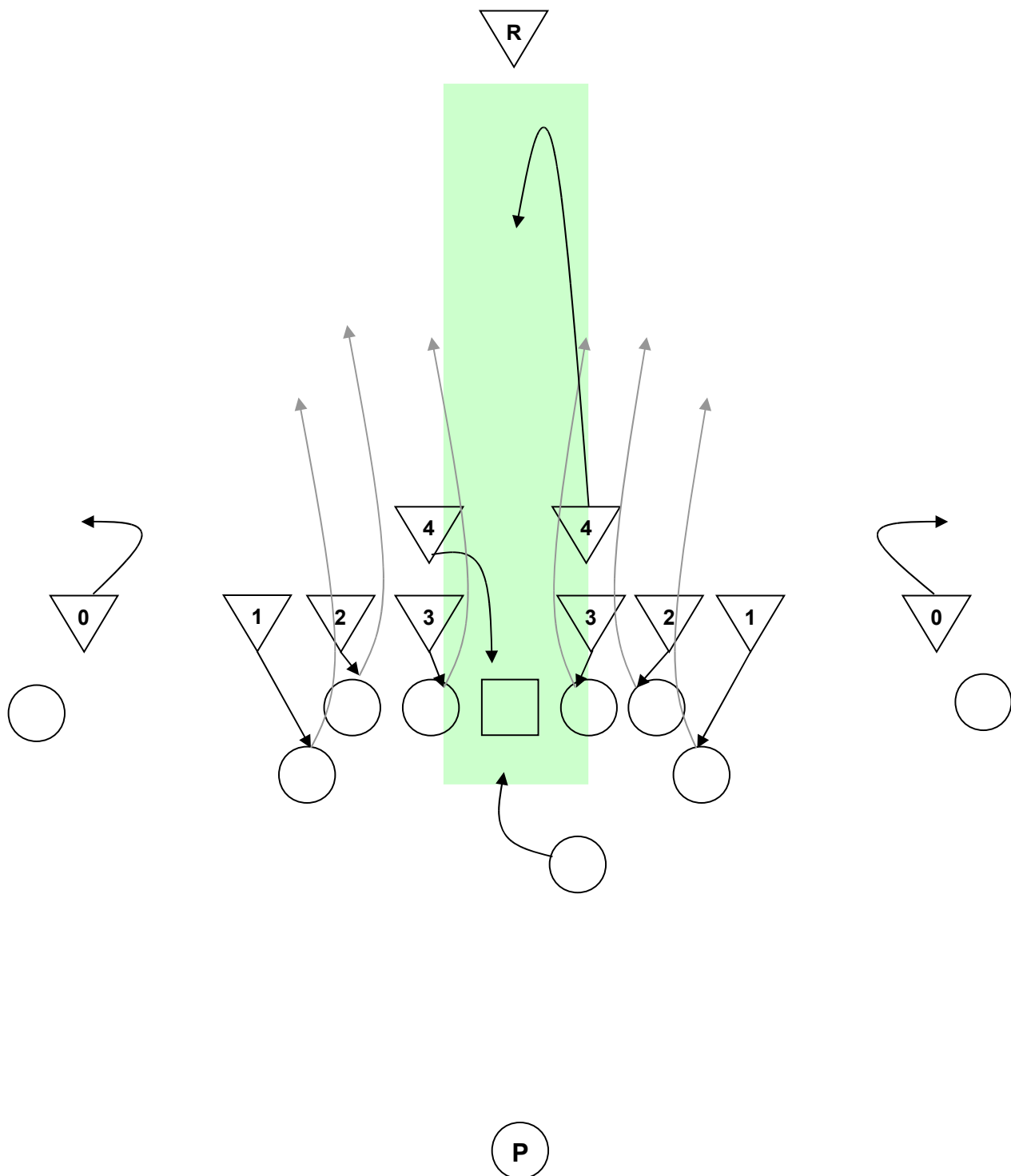
#3: G: Inside Shoulder Rush, Hold Up & Inside Shoulder Wall Off

#2: T: Inside Shoulder Rush, Hold Up & Inside Shoulder Wall Off

#1: #1: W: Inside Shoulder Rush, Hold Up & Inside Shoulder Wall Off



PUNT MIDDLE RETURN (4-4 OFF)



4-4 Off Look

#4: Left #4 Hold Up LS / Right #4 Drop Deep MDD (LS Late Release!)

#3: G: Inside Shoulder Rush, Hold Up & Inside Shoulder Wall Off

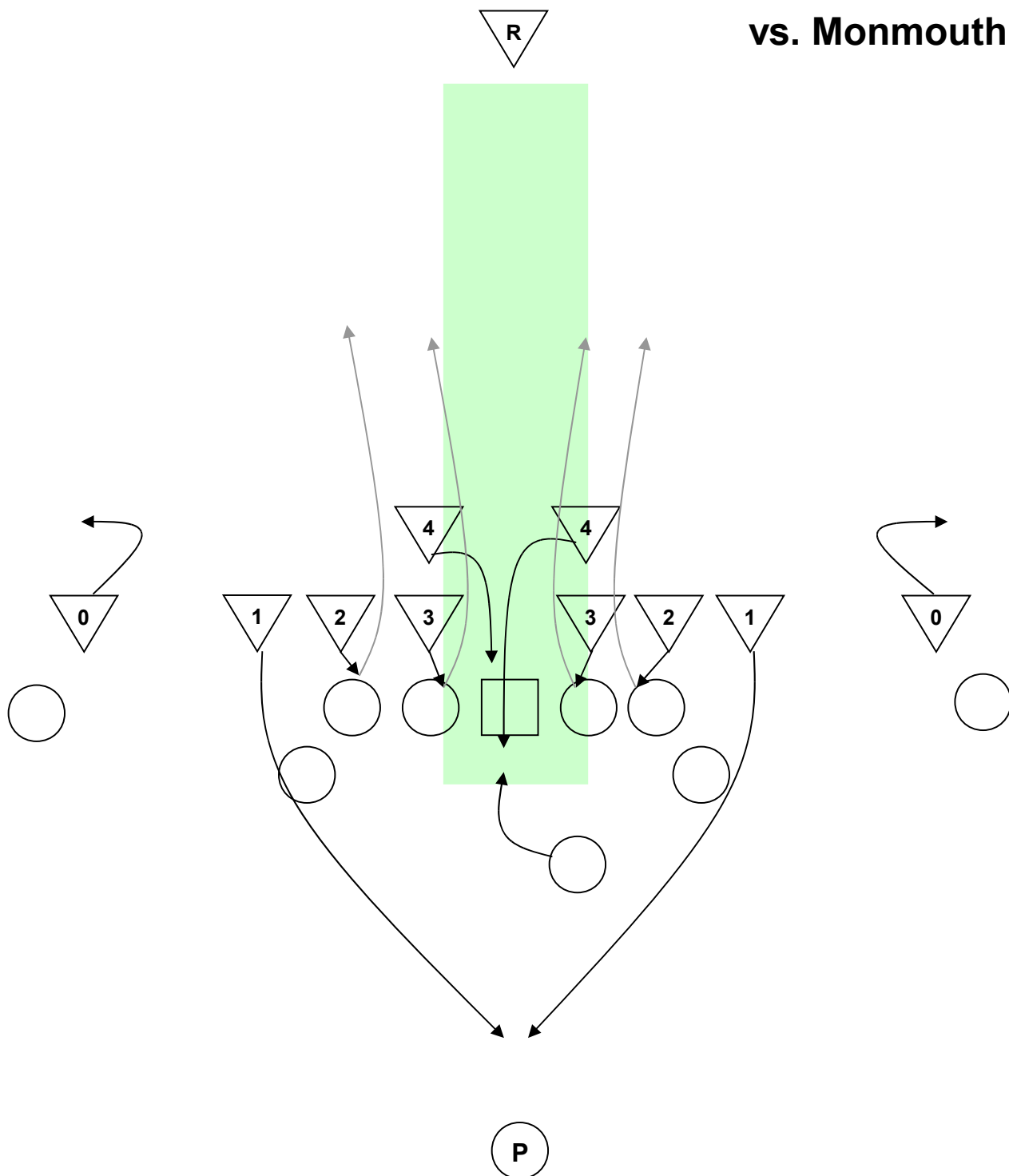
#2: T: Inside Shoulder Rush, Hold Up & Inside Shoulder Wall Off

#1: #1: W: Inside Shoulder Rush, Hold Up & Inside Shoulder Wall



PUNT MIDDLE RETURN (4-4 OFF)

vs. Monmouth



4-4 Off Look

#4: Left #4 Hold Up LS / Right #4 Hold Up PP

#3: G: Inside Shoulder Rush, Hold Up & Inside Shoulder Wall Off

#2: T: Inside Shoulder Rush, Hold Up & Inside Shoulder Wall Off

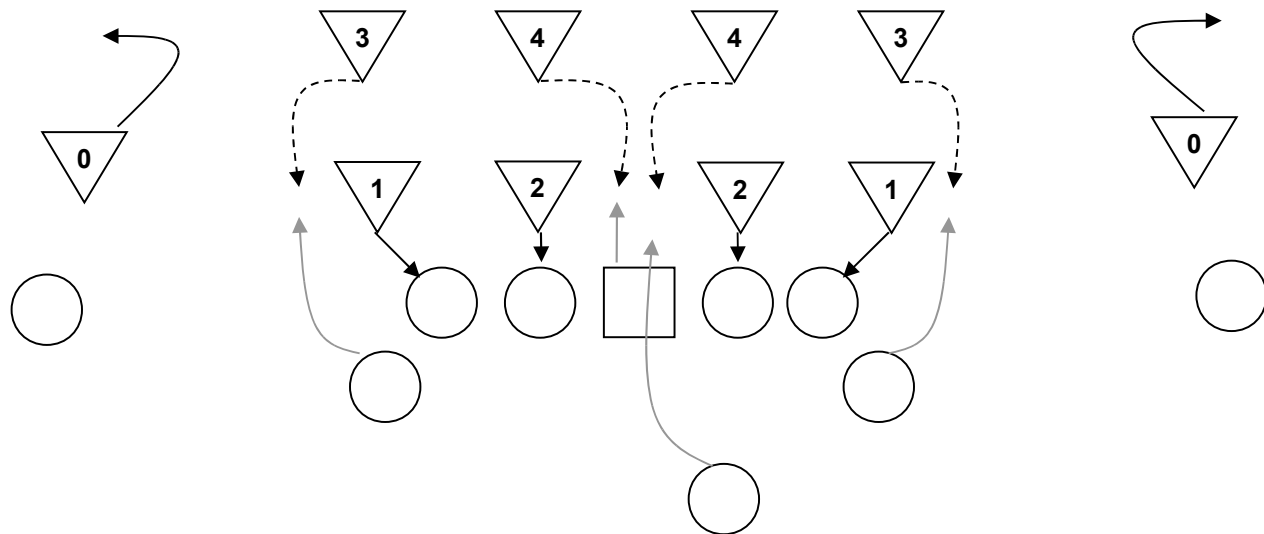
#1: #1: W: Rush D Gap > Blockpoint



SAFE PUNT (4-4 STACK)



vs. Monmouth
vs. UNH
vs. Northeastern



4-4 Stack Look

#4: Left #4 > LS / Right #4 PP

#3: Wings

#2: Hold Up G

#1: Hold Up T

PR: Check Ball

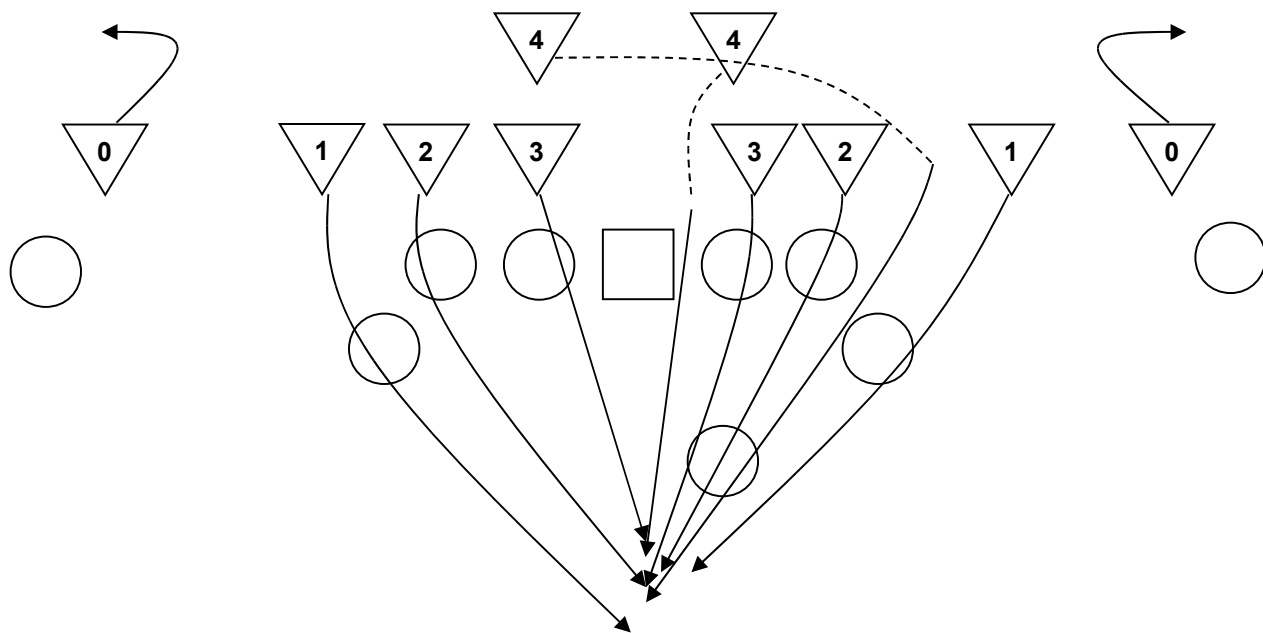




PUNT RUSH (3-5 SUGAR IN)



vs. Monmouth



4-4 Off Look > Sugar In to 3-5 Look

3 Side:

- #3: Bullrush G**
- #2: Rush C Gap**
- #1: Rush D Gap**

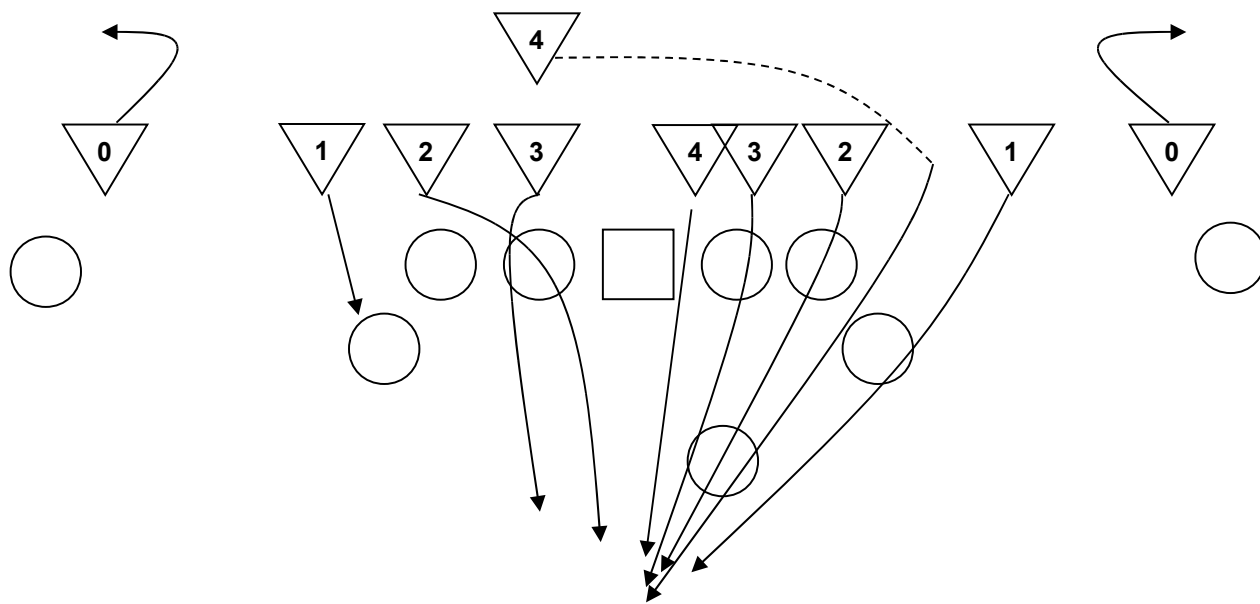


5 Side:

- #4: Sugar In > Rush A Gap**
- #3: Bullrush G**
- #2: Bullrush T**
- #4: Sugar In > Rush C Gap**
- #1: Rush D Gap**



PUNT RUSH (3-5 SUGAR IN)



3-4 Off Look > Sugar In to 3-5 Look

3 Side:

#3: Attack B Gap Hard!

#2: Loop In A Gap

#1: Hold Up W



5 Side:

#4: Rush A Gap

#3: Bullrush G

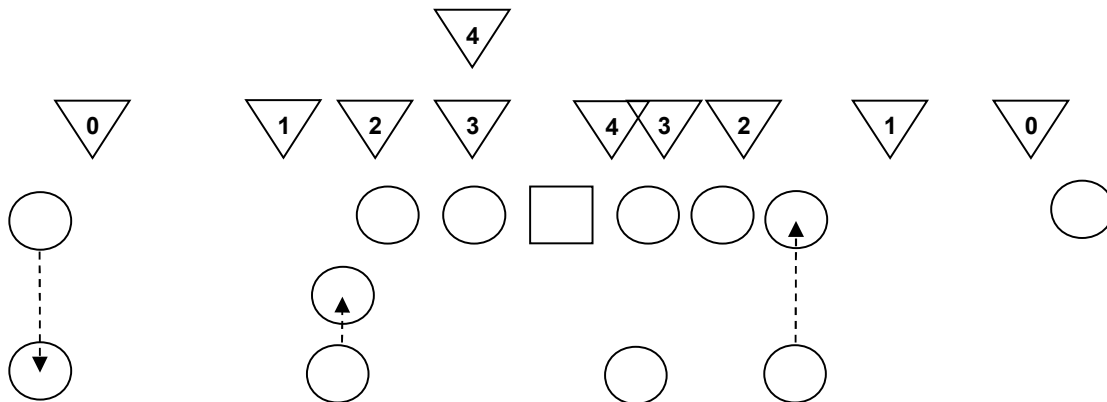
#2: Bullrush T

#4: Sugar In > Rush C Gap

#1: Rush D Gap



PUNT FAKE vs. (3-5 SUGAR IN)

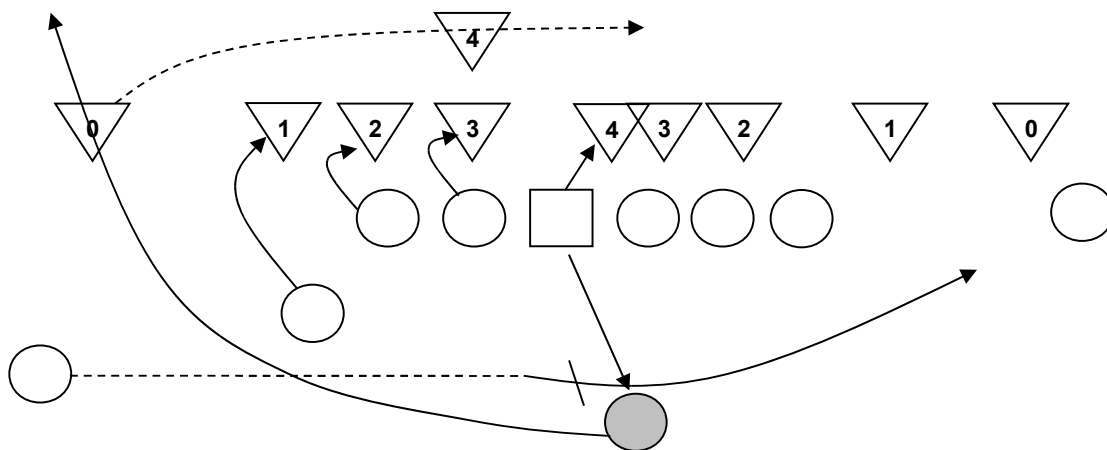


LG > Shift Off & Motion In > HO Fake

LW > Shift to LOS

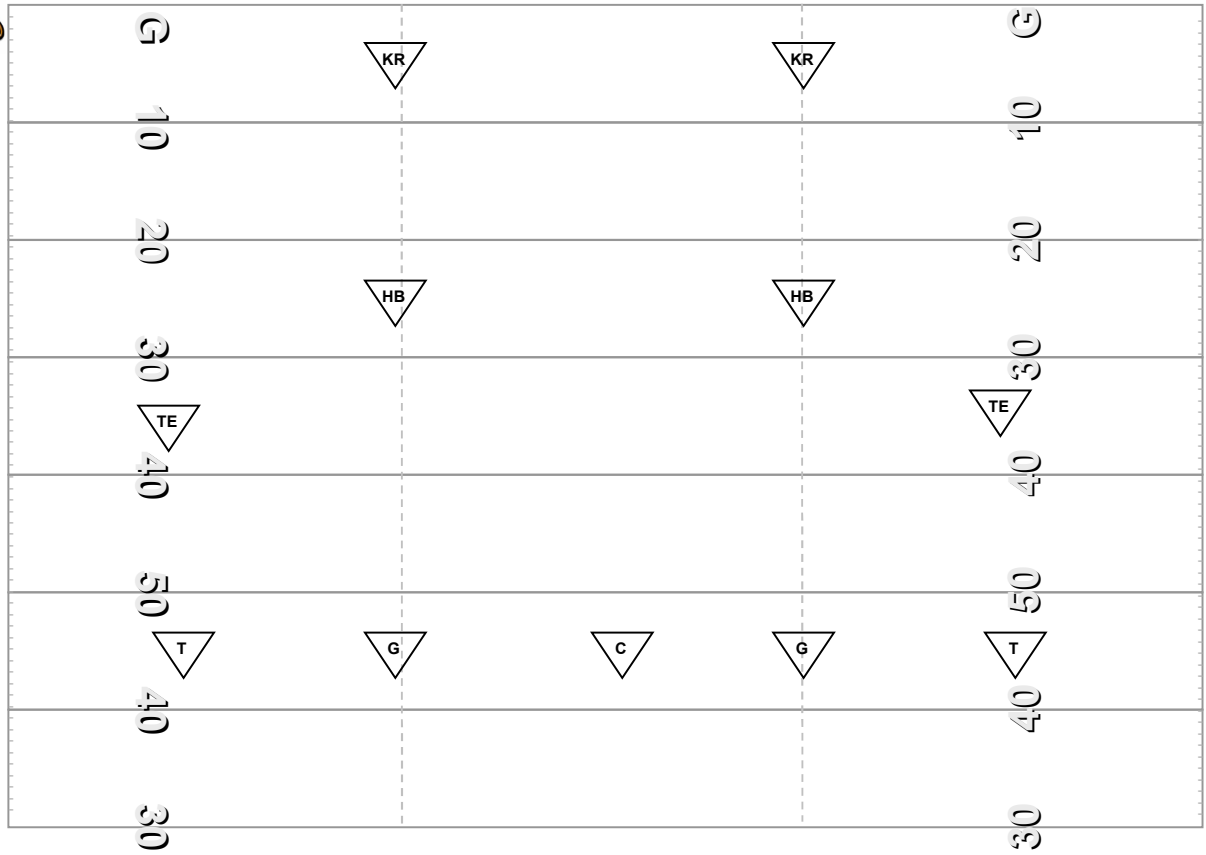
RW > Shift On

PP > Catch Snap > HO Fake > Run Left





KICK OFF RETURN TEAM



SYSTEM ANALYSIS

The Hens KOR Unit is a Wedge
Sideline Return Team.

They have a # counting blocking
System with 2 Post Up Blocks!

RETURNERS

#1 Kervin Michaud, JR (WR)

Great Speed, Good Courage,

Good Open Field Abilities

#38 Marvin McKinnie, JR (DB)

Overall Average Skills

STATS

#1 = 27-585, Ø 21,7Y, Lg 42Y

#38 = 10-146, Ø 14,6Y, Lg 23Y

TOTALS

43-796Y, Ø 18,5Y

Longest 42Y - 0 TD

SUMMARY

Below average Blocking KOR Unit
with Good Speed. The Hens
have 1 good Returners. He tries to
make things happen. The like to
bounce out of the Wedge and cut
back to the Field.

RETURN INDICATORS

HB the will form the Wedge on the

Return Side. The Wedge – KR

Relation is very sloppy!

ALERTS

The Hens run the Sideline Wedge

Return vs. every KO Team.

Both Side G/T try to Post Up #4

In a Double Team!

KEY OBSERVATIONS

The Hens are living from both KR.

They adjust to every poor blocking
with a good Field Vision & Courage!

VULNERABLE TO SURPRICE ONSIDE?

YES

Where?

Outside # > Sideline 40YL, Middle

How?

East (NAVY) & West Berlin, Germany

VULNERABLE TO BLOOP KICK?

NOPE

Where?

How?



KICK RETURN STATS

#91 IN THE NATION

KICK RETURNS	No.	Yds	Avg	TD	Long
Kervin Michaud	27	585	21.7	0	42
Marvin McKinnie	10	146	14.6	0	23
Mark Duncan	3	30	10.0	0	20
Aaron Hicks	2	25	12.5	0	17
Charles Graves	1	10	10.0	0	10
Total.....	43	796	18.5	0	42
Opponents.....	72	1415	19.7	0	74

KICKOFF RETURNS	G	Ret	Yds	TD	Avg
1. Villanova.....	11	44	1158	1	26.3
2. New Hampshire.....	11	52	1229	1	23.6
3. James Madison.....	11	45	1009	1	22.4
4. William and Mary....	11	57	1235	0	21.7
5. Richmond.....	11	43	929	2	21.6
6. Maine.....	11	42	898	0	21.4
7. Hofstra.....	11	45	951	2	21.1
8. Massachusetts.....	11	30	616	1	20.5
9. Rhode Island.....	11	52	1021	0	19.6
10. Northeastern.....	11	50	960	0	19.2
11. Delaware.....	11	43	796	0	18.5
12. Towson.....	11	47	844	0	18.0

KICK RETURN AVG	Team	Cl	G	Ret	Yds	TD	Long	Avg
1. Justin Rogers.....	RICH	SO	9	20	651	2	93	32.5
2. Angelo Babbaro.....	VU	SO	9	22	636	1	95	28.9
3. Courtney Robinson...	UMAS	JR	11	16	423	1	100	26.4
4. Matthew Szczur.....	VU	FR	11	19	495	0	40	26.1
5. Kareem Huggins.....	HOF	SR	9	26	641	2	98	24.7
6. David Caldwell.....	W&M	SO	11	20	486	0	54	24.3
7. Thomas Schonder.....	W&M	FR	10	17	390	0	34	22.9
8. Jimmy McClam.....	TOWS	JR	10	25	554	0	42	22.2
9. Kervin Michaud.....	DELA	JR	9	27	585	0	42	21.7
10. Antonio Walcott.....	MAIN	FR	11	20	422	0	34	21.1



PERSONAL KICK RETURNER

#1
Kervin Michaud

Junior
Wide Receiver
Levittown, PA/Pennsbury



High School: Standout wing back at Pennsbury High School for coach Galen Snyder...All-State in 2003 when he rushed for 1,130 yards and caught 23 passes for 545 yards for team that went 7-3...2003 Southeastern Pennsylvania Area Player of the Year for football and track and field.....placed third in 400 meters and fourth in 200 meters at 2003 state track and field championships.

At Delaware: Third-year member of the squad as a junior and a two-year starter...one of team's most versatile and valuable performers as a wide receiver, running back, and kick returner...multi-purpose threat who has good speed and is capable of making the big-play... expected to take over the primary kickoff return role... 24 career kickoff returns...

2006: Proved to be a valuable member of the offense once again as he split time between wide receiver and running back for most of the season Northeastern, and 41 yards and one touchdown on 15 carries vs. James Madison... had a season-long 36-yard kickoff return vs. Towson...averaged 28.0 yards on two kickoff returns vs. Towson and 26.5 on two kickoff returns vs. Northeastern

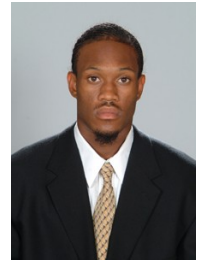
2005: also returned seven kickoffs for a 23.1-yard average...returned three kickoffs for 91 yards vs. West Chester, including a career-long 42-yarder...also returned a kickoff 29 yards against Villanova...

2004: Did not see game action as a true freshman and retained freshman eligibility...team went 9-4, won the Atlantic 10 title, and advanced to the NCAA I-AA quarterfinals.

Personal: Kervin Michaud ("curvin muh-shawd")...born June 7, 1985...son of Kettelie Sylvestre...has four brothers and sisters...civil engineering major at Delaware with a minor in mathematics...Atlantic 10 All-Academic honoree...enjoys playing video games and fishing in spare time....has worked as a roofer during the summers.

#38
Marvin McKinnie

Junior
Defensive Back
Woodbury, NJ/Woodbury (JC)



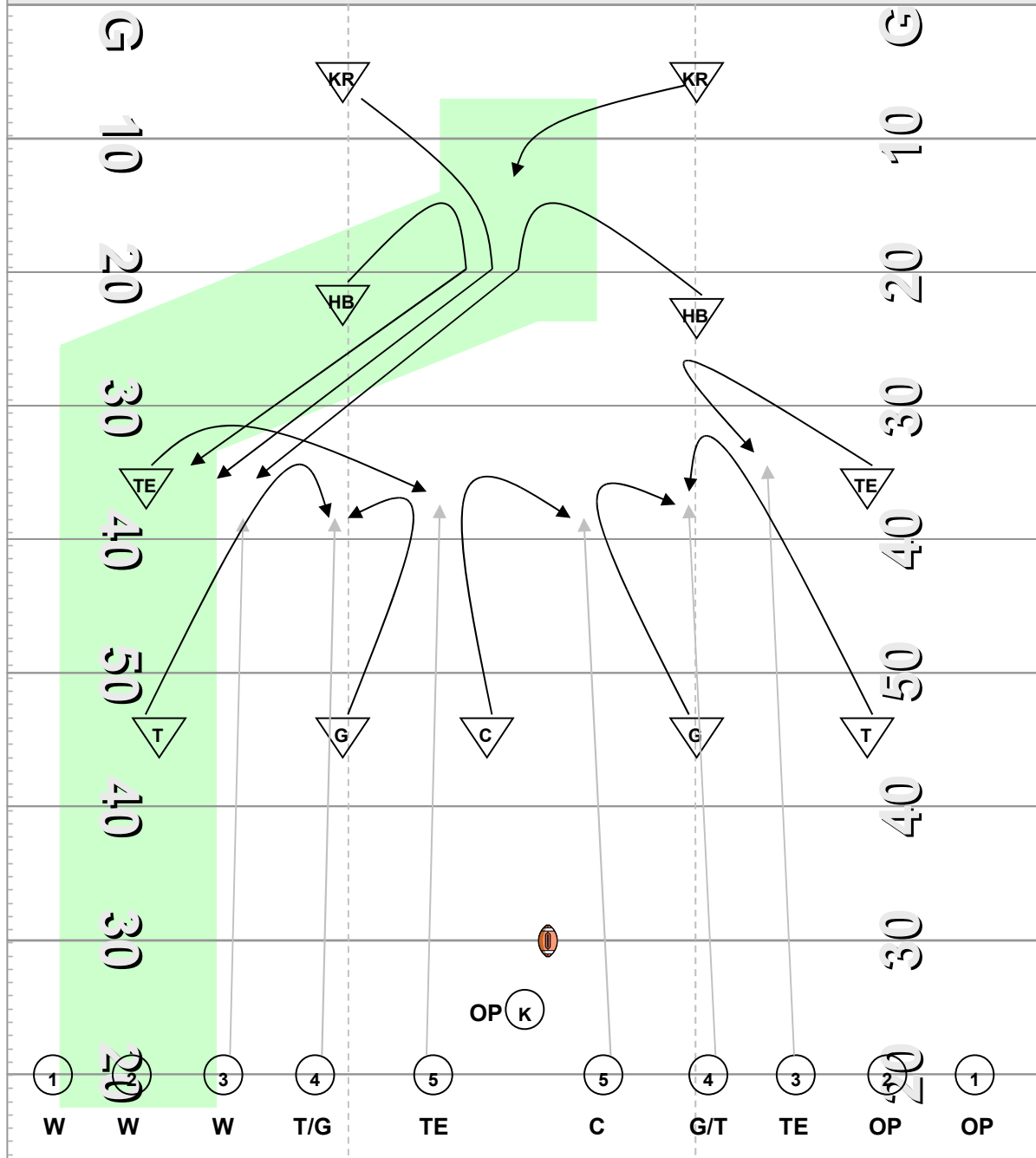
High School: Enjoyed a standout high school career at Woodbury High School where he was one of the top defensive backs in South Jersey...played cornerback and returned kicks and punts...earned All-South Jersey honors as a senior and was a three-time All-Colonial Conference selection...recorded eight interceptions as a junior and nine as a senior at Woodbury HS...named Most Valuable Player of Adam Taliaferro All-Star Game...At Delaware: First-year member of the squad after transferring from Dean Junior College in St. Franklin, MA...junior who will have two years of eligibility at Delaware....talented defensive back with good speed and a nose for the football...will add college experience to a young but talented Blue Hen secondary...slated to open pre-season as team's No. 2 right cornerback behind redshirt freshman Anthony Walters...could also return kicks this season.

At Dean Junior College: Played two seasons as a cornerback and kick and punt returner for head coach Todd Vasey at Dean Junior College...intercepted 11 passes in two seasons...**2006:** Despite missing two games with injuries, recorded 34 tackles and ranked second in the conference in passes defended with 17 on five interceptions and 12 pass breakups...ranked fourth in league in interceptions...team went 6-4 and tied for third in the Northeast Football Conference...**2005:** Collected six interceptions in first season at Dean JC...was ranked the No. 19 defensive back in the country at the JUCO level.

Personal: Marvin McKinnie....born June 25, 1986...son of Deborah Young...cousin of Minnesota Vikings All-Pro offensive lineman Bryant McKinnie.



SIDELINE RIGHT WEDGE RETURN (DBL-DBL) vs. 5-5 MIDDLE

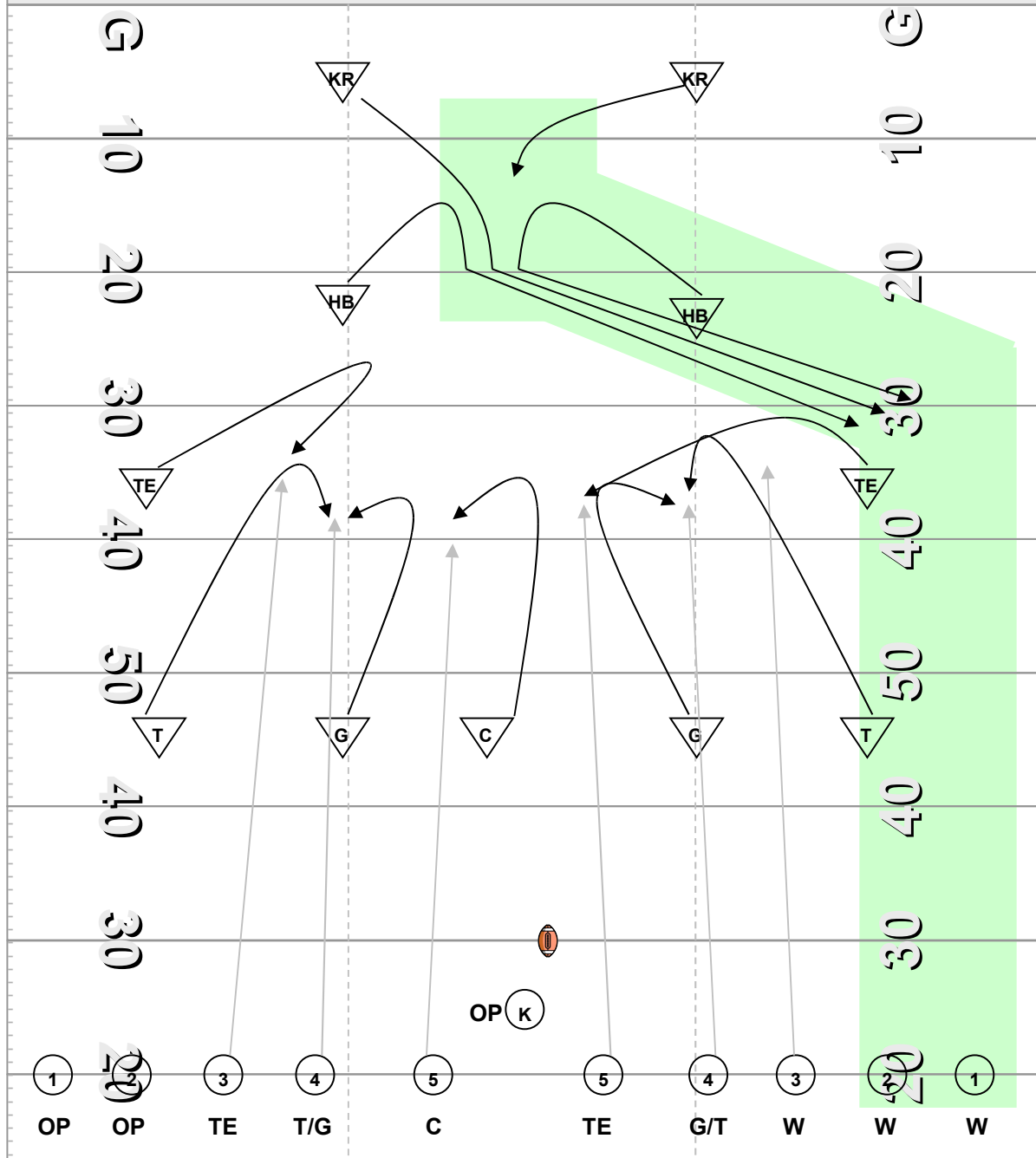


5-2-2-2 Look
T's: # 45YL
G's: Hash 45YL
C: 45YL RM or LM
TE's: # 35YL
HB: Hash 25YL
KR: Hash 10Y

T/G: Post Up #4
C: Wall Off Outside-In #5
TE: Kick In #5
G/T: Post Up #4
HB's/OFFKR: Wedge
KR: Read & R4D



SIDELINE LEFT WEDGE RETURN (DBL-DBL) vs. 5-5 MIDDLE

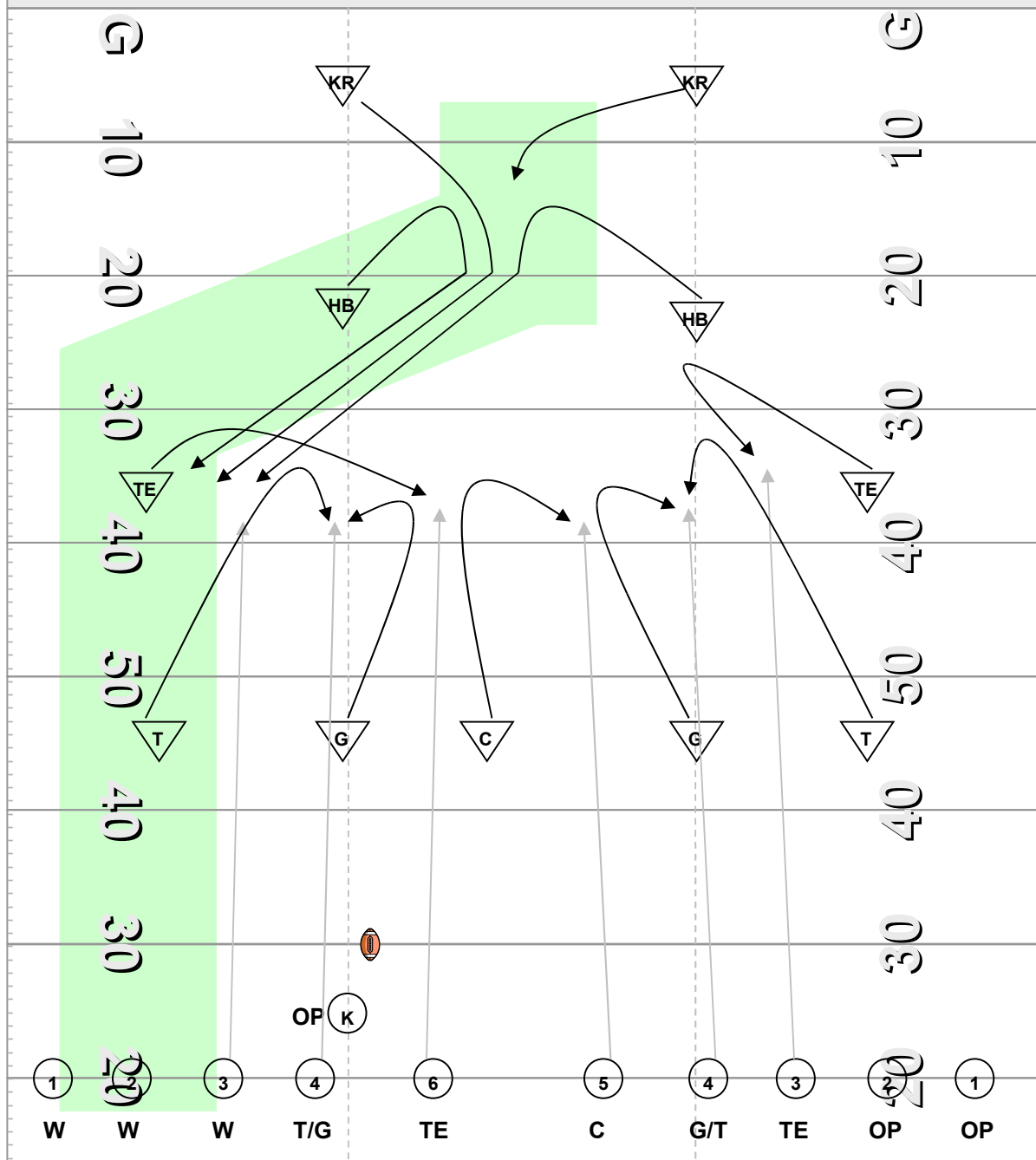


5-2-2-2 Look
T's: # 45YL
G's: Hash 45YL
C: 45YL RM or LM
TE's: # 35YL
HB: Hash 25YL
KR: Hash 10Y

T/G: Post Up #4
C: Wall Off Outside-In #5
TE: Kick In #5
G/T: Post Up #4
HB's/OFFKR: Wedge
KR: Read & R4D



SIDELINE RIGHT WEDGE RETURN (DBL-DBL) vs. 4-6 LEFT HASH



5-2-2-2 Look

T's: # 45YL

G's: Hash 45YL

C: 45YL RM or LM

TE's: # 35YL

HB: Hash 25YL

KR: Hash 10Y

T/G: Post Up #4

C: Wall Off Outside-In #6

TE: Kick In #5

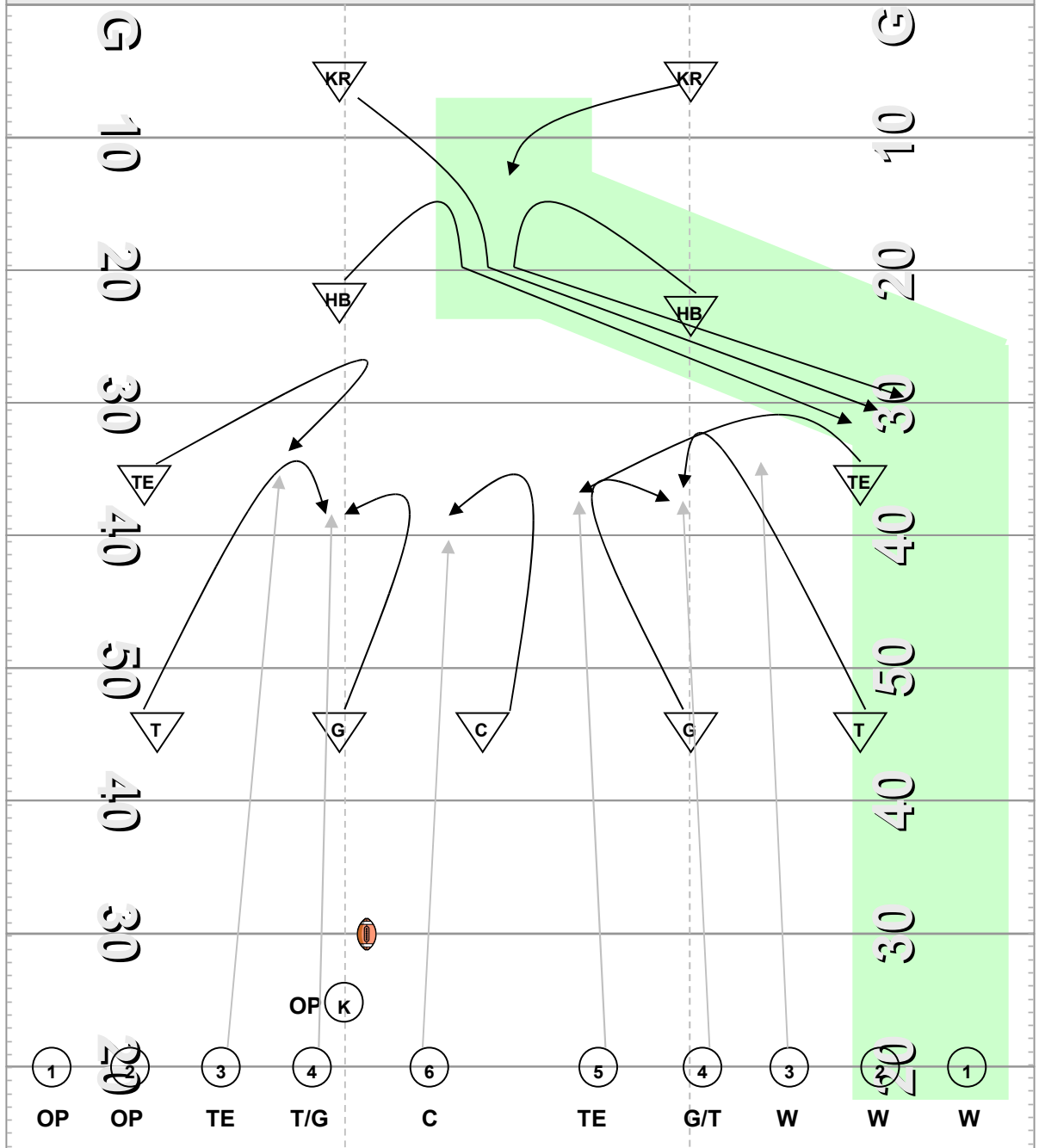
G/T: Post Up #4

HB's/OFFKR: Wedge

KR: Read & R4D



SIDELINE LEFT WEDGE RETURN (DBL-DBL) vs. 4-6 LEFT HASH



5-2-2-2 Look

T's: # 45YL

G's: Hash 45YL

C: 45YL RM or LM

TE's: # 35YL

HB: Hash 25YL

KR: Hash 10Y

T/G: Post Up #4

C: Wall Off Outside-In #6

TE: Kick In #5

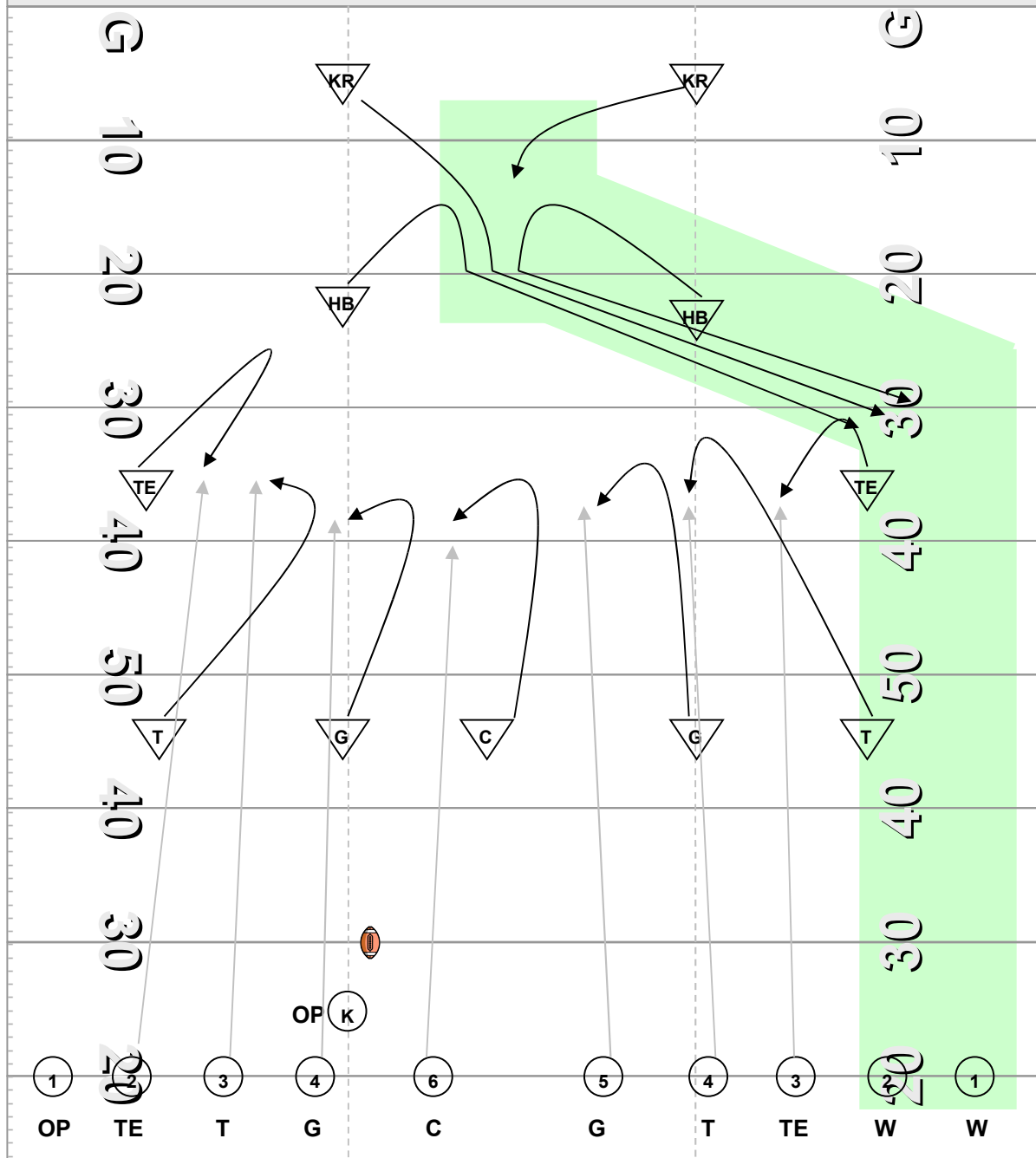
G/T: Post Up #4

HB's/OFFKR: Wedge

KR: Read & R4D



SIDELINE LEFT WEDGE RETURN vs. 4-6 LEFT HASH



5-2-2-2 Look

T's: # 45YL

G's: Hash 45YL

C: 45YL RM or LM

TE's: # 35YL

HB: Hash 25YL

KR: Hash 10Y

T: Inside-Out #3

G: Inside-Out #4

C: Inside-Out #5

TE: Inside-Out #2

G: Outside-In #5

T: Outside-In #4

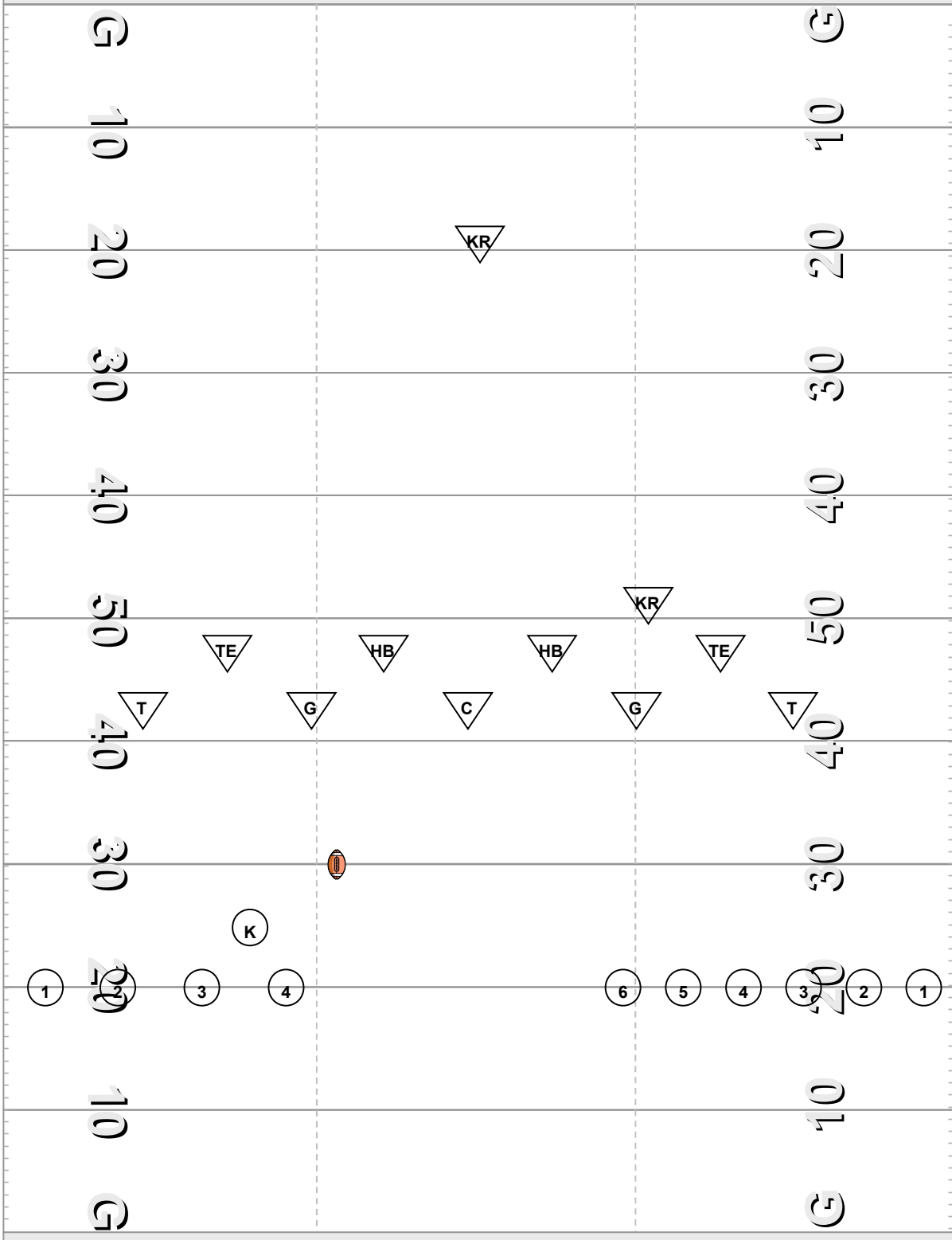
TE: Outside-In #3

HB's/OFFKR: Wedge

KR: Read & R4D



HANDSTEAM vs. 4-6 LEFT HASH





HANDSTEAM vs. 5-5 MIDDLE

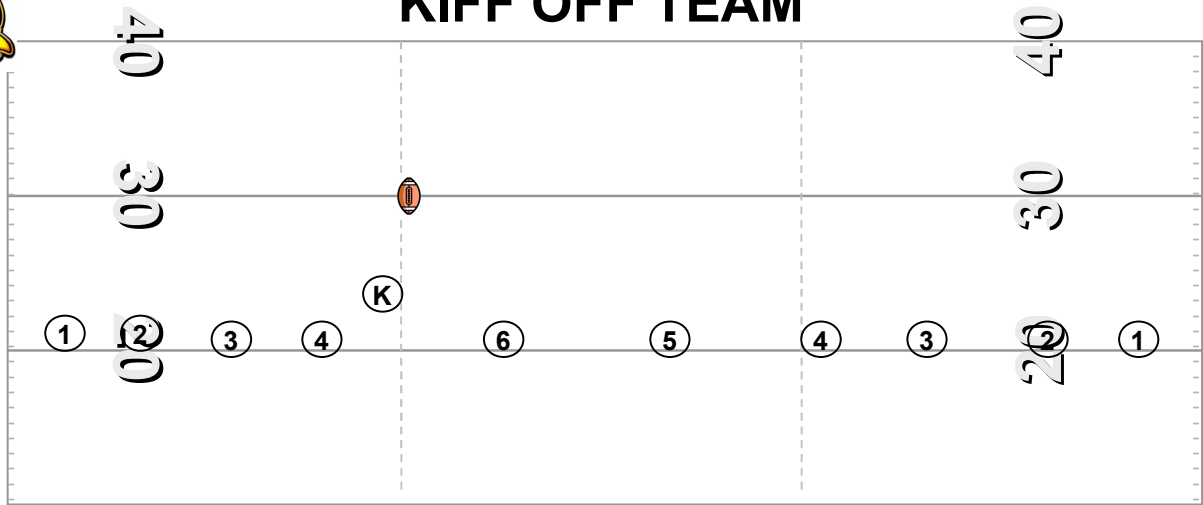
G 10 20 30 40 50 40 30 20 10 G

G 10 20 30 40 50 40 30 20 10 G





KIFF OFF TEAM



SYSTEM ANALYSIS

The Hens have a very aggressive speedy Field

Cover KO Unit. They are a 4-6

Hash Unit with Deep, Squib & some Pooch Kicks.

KICKER

Approach: 8-4 / 7 Steps

Direction: Middle Deep, Squib

Hang Time: 2,87 – 3,90s

Distance: Ø 56,7Y

LT/RT Footed: Right

Onside Ability: NOPE

COVERAGE

L1 & R1 > Squeeze In & Safety

L2 & R2 > Outside Contain

Kicker will clean the Field

L3-L4-R6-R5-R4-R3 > Lanes

Great Field Coverage

Great Outside Contain/Safeties

BEST COVER MEN

L1 (5T), L2 (7T), L3 (6T), L4(5T)

R6 (5T), R5 (8T)

SUMMARY

Very fast and aggressive Kick Off

Unit with great open Field Abilities.

Good Tackling, good avoiding from

Blocks and great Wedge Blow Ups.

Ø RETURN vs. THEM

72-1415Y

Ø 19,7Y

Longest 74Y – 0 TD

Ø START vs. THEM

-32YL

KEY OBSERVATIONS

Left Hash > Deep & Squib

Right Hash > Pooch Right & Left

SAFETIES

#1 Squeeze In & Safety

#2 Outside Contain

Kicker will clean the Field

ONSIDE KICKS

NOPE

Score of Game:

Time Remaining:

Suprise?:

Alignment:

Courage:

Overall Ability:

STATS

#47 Jon Striefsky

Ø 56,7Y

75-4254Y, 0 Touch Back, 2 OOB

TOTALS

76-4297Y, 0 Touch Back, 2 OOB

Ø 56,5Y

SPECIALS

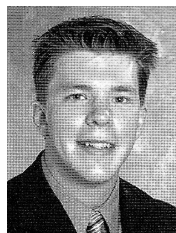
Pooch from the Right Hash (6-4)



KICK OFF PERSONAL

#47 Jon Striefsky

**Kicker
Sophomore
Place Kicker**



Lansdale, PA/North Penn

High School: Competed in football, baseball, basketball, and soccer at North Penn High School...two-year varsity letterwinner as a kicker and punter in football for head coach Dick Beck...

At Delaware: Walk-on...third-year member of the squad...has sophomore eligibility after sitting out 2006 season as a redshirt despite being No. 2 on depth chart all season...top candidate to take over extra point and field goal placements and kickoff chores after two-year starter Zach Hobby left school following the 2006 fall semester...will battle incoming true freshman Mike Perry for starting kicking spot for Hens...had a solid spring and was outstanding in Blue-White Spring Game in April, connecting on both extra point attempts and converting six of seven field goal attempts...connected on field goals from 43 and 42 yards in controlled scrimmage...has seen action in just one career game...**2006:** Second-year backup to sophomore kicker Zach Hobby...did not see game action and retained sophomore eligibility...team went 5-6 under head coach K.C. Keeler...hit on all four extra point attempts and connected on four of seven field goal attempts with a long of 32 yards in Blue-White spring game...**2005:** One of eight true freshmen to see action for the Blue Hens...walk-on who was thrust into action vs. James Madison Oct. 22 when Hobby was suspended for missing the pre-game meal...game was his only action of the season...handled kickoff duties and missed his only extra point attempt in Blue Hens' upset win over the defending national champions...team went 6-5.

Personal: Jonathan Edmund "Jon" Striefsky ("stri-eff-ski")...born Oct. 21, 1986...son of Edmund and Barbara Striefsky...finance major at Delaware...has a younger sister...works as a landscaper and umpires youth baseball during the summer...uncle, James Striefsky, played college soccer at Quinnipiac in 1980-84.



KICK OFF STATS

#43 IN THE NATION

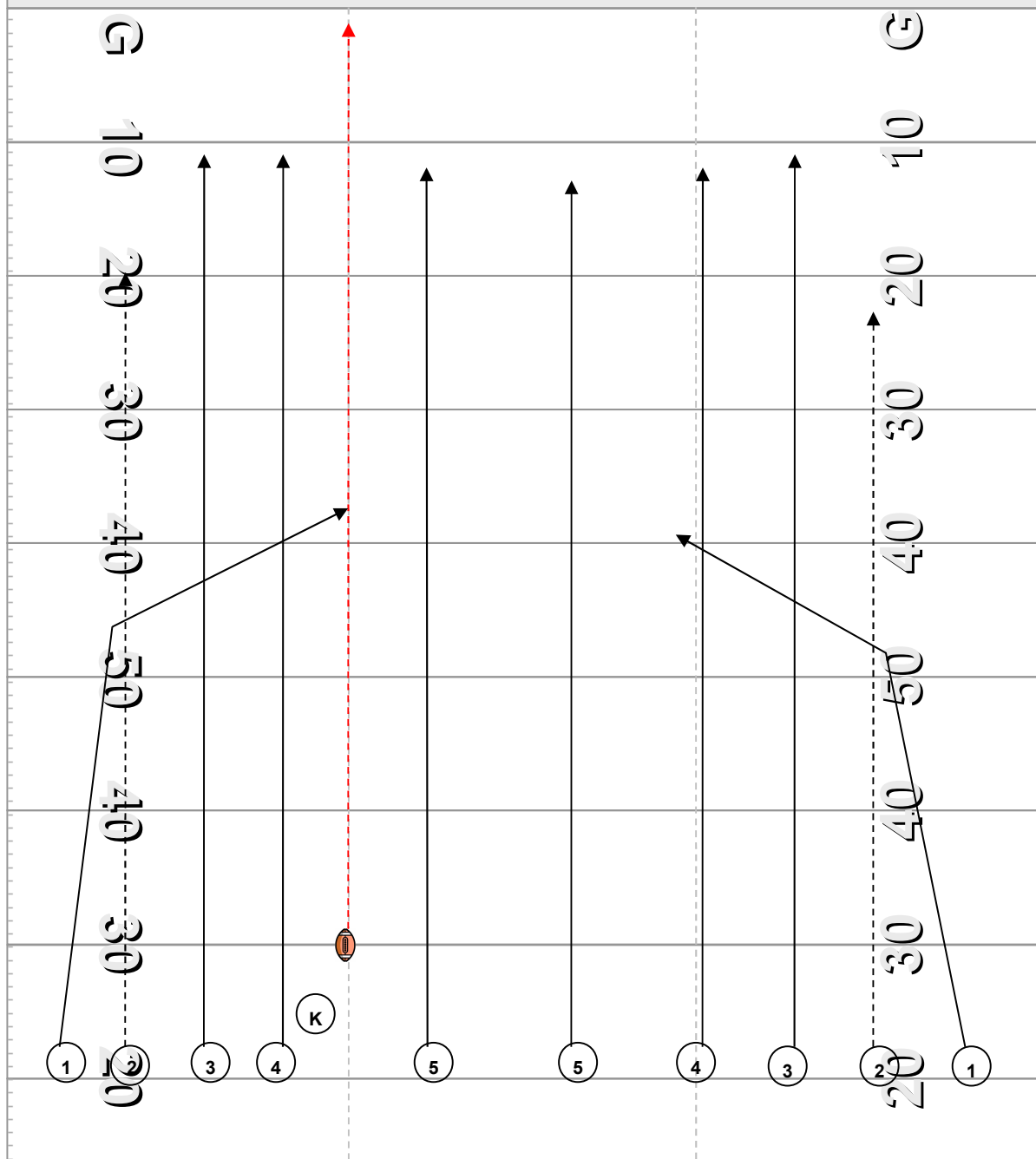
KICKOFFS	No.	Yds	Avg	TB	OB	Retn	Net	YdLn
Jon Striefsky	75	4254	56.7	0	2			
Stuart Kenworthy	1	43	43.0	0	0			
Total.....	76	4297	56.5	0	2	1415	37.9	32
Opponents.....	51	2932	57.5	3	3	796	40.7	29

KICKOFF COVERAGE	G	No.	Yards	Avg	Retn	TB	NetAvg
1. Massachusetts.....	11	60	3890	64.8	858	18	44.5
2. Villanova.....	11	55	3437	62.5	862	10	43.2
3. James Madison.....	11	71	4059	57.2	830	13	41.8
4. New Hampshire.....	11	71	4215	59.4	1383	2	39.3
5. Towson.....	11	39	2383	61.1	727	7	38.9
6. Rhode Island.....	11	44	2438	55.4	644	6	38.0
7. Delaware.....	11	76	4297	56.5	1415	0	37.9
8. Richmond.....	11	71	4033	56.8	1346	1	37.6
9. Hofstra.....	11	61	3415	56.0	999	7	37.3
10. Maine.....	11	43	2357	54.8	743	1	37.1
11. Northeastern.....	11	45	2403	53.4	814	1	34.9
12. William and Mary....	11	59	2915	49.4	902	1	33.8

ON-SIDE KICK ALLOWED	G	OnSide	Percent	ON-SIDE KICK SUCCESS	G	OnSide	Percent
1. New Hampshire.....	11	0-2	0.0	1. James Madison.....	11	1-1	100.0
Villanova.....	11	0-1	0.0	2. Rhode Island.....	11	2-4	50.0
Richmond.....	11	0-1	0.0	3. Towson.....	11	0-2	0.0
Delaware.....	11	0-1	0.0	Villanova.....	11	0-1	0.0
Maine.....	11	0-1	0.0	Delaware.....	11	0-1	0.0
Hofstra.....	11	0-0	0.0	Northeastern.....	11	0-0	0.0
Towson.....	11	0-0	0.0	Maine.....	11	0-0	0.0
Rhode Island.....	11	0-0	0.0	Hofstra.....	11	0-0	0.0
Massachusetts.....	11	0-0	0.0	William and Mary....	11	0-0	0.0
10. Northeastern.....	11	1-1	100.0	New Hampshire.....	11	0-0	0.0
William and Mary....	11	1-1	100.0	Richmond.....	11	0-0	0.0
James Madison.....	11	1-1	100.0	Massachusetts.....	11	0-0	0.0



KICK OFF COVERAGE LEFT HASH



4-6 Look

Ball: Left Hash

R1: Squeeze In > Safety

R2: Outside Contain

R3-R6: Field Coverage (Lanes)

Kicker: Is Cleaning the Field

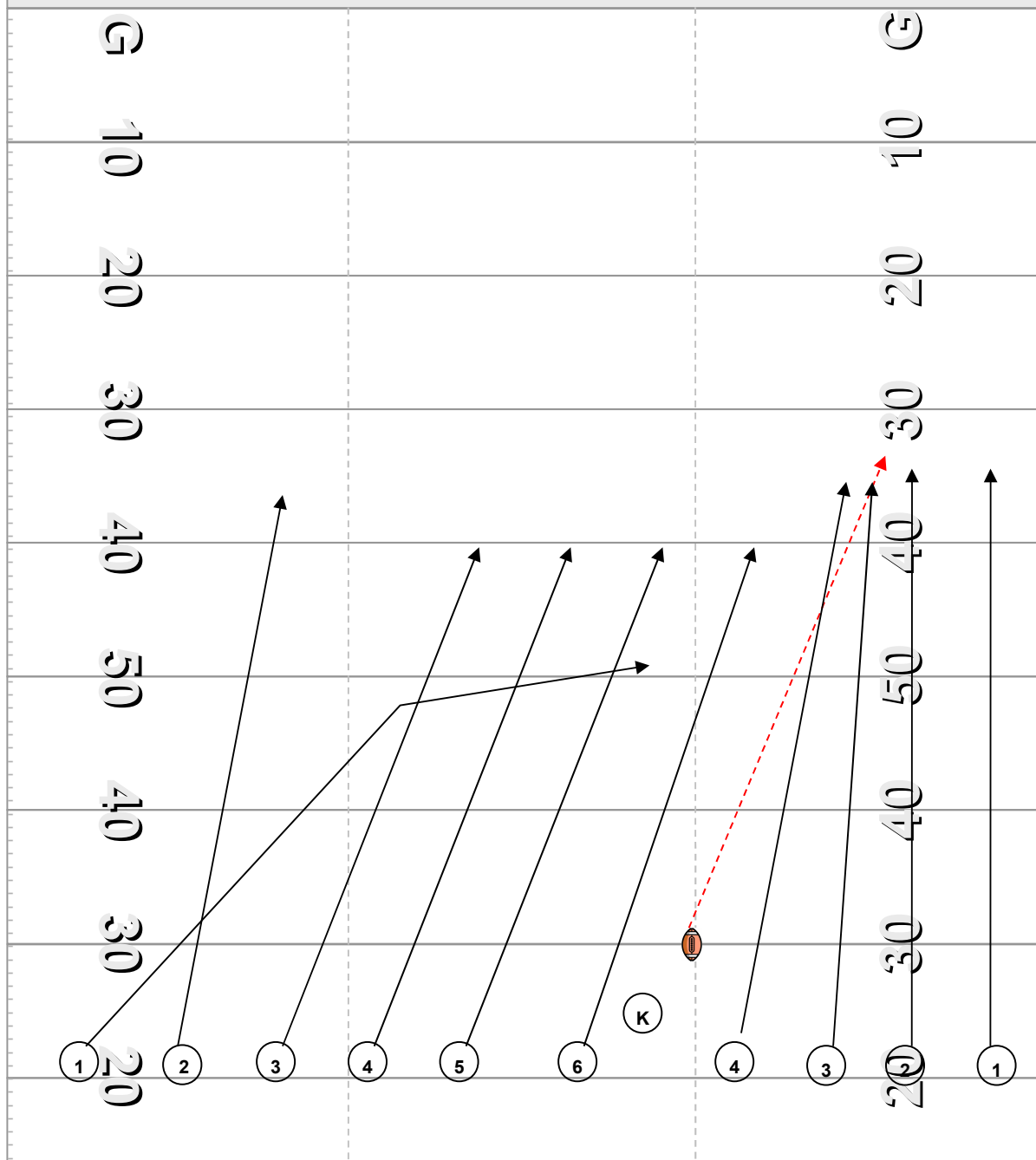
L3-L4: Field Coverage (Lanes)

L2: Outside Contain

L1: Squeeze In > Safety



KICK OFF COVERAGE RIGHT HASH POOCH



6-4 Look

Ball: Right Hash

R1: Squeeze In > Safety

R2: Outside Contain

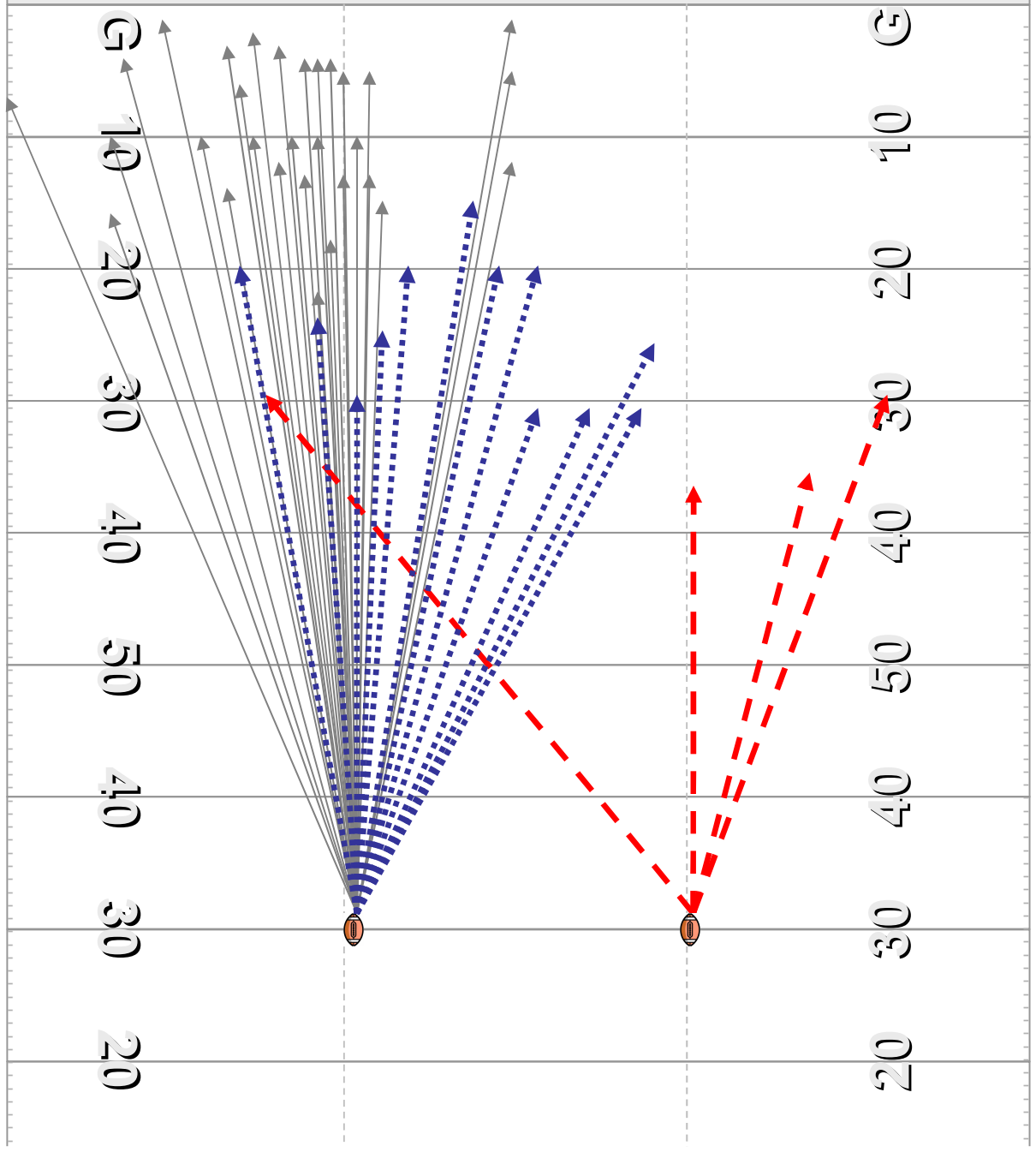
R3-R6: Field Coverage (Lanes to the Ball)

Kicker: Is Cleaning the Field

L1-L4: Ball



KICK OFF SPOTS



Pooch Kick



Squib Kick



Deep Kick



KICK OFF OPERATIONS

	1	2	3	4	5	6	7	8	9	10	11	12
PLACE	LH	LH	LH	LH	LH	LH	LH	LH	LH	LH	LH	LH
KICK	DEEP	DEEP	DEEP	DEEP	DEEP	SQUIB	DEEP	DEEP	DEEP	DEEP	DEEP	DEEP
HAT	3,40	3,52	3,60	3,37	3,55	-	2,87	3,60	3,45	3,29	3,21	3,78
TACK	L1	L2/L4	L3	L4	L3	R6	L1/L2	L4/R1	L3	L2	R6	R4
OPP	MON	MON	MON	MON	MON	MON	MON	UNH	UNH	UNH	UNH	UNH

	13	14	15	16	17	18	19	20	21	22	23	24
PLACE	LH	LH	LH	LH	LH	LH	LH	LH	LH	LH	LH	LH
KICK	DEEP	DEEP	SQUIB	DEEP	DEEP	SQUIB	SQUIB	DEEP	DEEP	DEEP	SQUIB	DEEP
HAT	3,15	3,36	-	3,45	3,60	-	-	3,76	3,90	3,51	-	3,65
TACK	L4/L2	L1	DOWN	R5	OOB	R5	L3	R5	L3	R4	R1	L1
OPP	NE	NE	NE	NE	NE	NE	NE	NAVY	NAVY	NAVY	NAVY	NAVY

	25	26	27	28	29	30	31	32	33	34	35	36
PLACE	LH	LH	LH	LH	LH	LH	LH	LH	LH	LH	LH	LH
KICK	DEEP	DEEP	DEEP	SQUIB	SQUIB	SQUIB	SQUIB	DEEP	SQUIB	DEEP	DEEP	DEEP
HAT	3,76	3,16	3,54	-	-	-	-	3,37	-	3,57	3,12	3,37
TACK	R6/R5	L1/L3	R2	R5	DOWN	R5	R1	L2	L2	R2	L2	R4
OPP	NAVY	NAVY	NAVY	NAVY	NAVY	JM	J;M	JM	JM	JM	JM	JM

	37	38	39	40	41	42	43	44	45	46
PLACE	LH	RH	RH	RH	RH	LH	LH	LH	LH	LH
KICK	SQUIB	POOL	POOL	POOR	POOR	DEEP	SHORT	DEEP	DEEP	SQUIB
HAT	-	3,45	3,34	3,00	2,91	3,56	2,10	3,66	3,51	-
TACK	R5	FC	L4	R3	R5	R2	L6	FR KI	L6	R2
OPP	JM	RICH	RICH	RICH	RICH	RICH	RICH	VILLA	VILLA	VILLA